



BEST *of* *the* **WEST**

AN INSIDER'S GUIDE TO GREATER WESTERN SYDNEY

**Western
Sydney
Leadership
Dialogue**

An aerial photograph of Bankwest Stadium in Sydney, Australia. The stadium is a large, modern structure with a complex, translucent roof made of steel and glass panels. It is surrounded by a parking lot filled with cars and some greenery. In the background, the Sydney city skyline is visible, featuring several tall skyscrapers under a clear blue sky. The image is split into two parts by a diagonal line: the left part shows a hazy, distant view of the city, while the right part shows a closer, clearer view of the stadium and surrounding area.

BEST *of* the WEST

CONTACT THE DIALOGUE

info@westernsydney.org.au
www.westernsydney.org.au
Twitter: @WSDialogue
Instagram: @bestofthewest_

Western
Sydney
Leadership
Dialogue

PHOTOGRAPHY CREDIT/WAIVER:

The Dialogue recognises the photographic work and skill of every contributor featured in this guide. We take no credit for published images provided to us and thank those who supported this not-for-profit compilation of images and data. We recognise this guide is our opinion only and aims to respectfully spark debate regarding future inclusions. Our apologies to those featured or omitted who want more time in the spotlight.

Visit our Instagram page and tell us your *#bestofthewest*

July 2019

Cover image: Dharawal National Park
Facing image: Bankwest Stadium

INTRODUCTION

The Western Sydney Leadership Dialogue has produced this inaugural guide to the region as a way of sharing our insight into the projects, events, centres of education, activities, business successes, natural assets and hidden gems that are helping shape the growth of the most dynamic region in the country.

This publication has been made possible through the hard work of the Dialogue team, led by Adam Leto, and via the support of Western Sydney University. With over 40,000 students in multiple campuses across the region, Western's local investment not only manifests in its campuses, innovation precincts and corporate partnerships but in the human capital it employs and serves, from Lithgow to Olympic Park and from Hawkesbury to Campbelltown. Western Sydney University is the most important institution in our region, it's a fundamental part of the proud and diverse community we support and we thank them for their generosity.

Best of the West provides a snapshot of our region, captured in many forms, with the aim of raising awareness about the things that make it magnificent and to encourage everyone to think big about our part of the world.

What have we missed, what have we got wrong, what needs to be added? The Dialogue has started the conversation with this little book but we want your input to make it even better next time!

Email us via info@westernsydney.org.au and share your own nominations via Twitter and Instagram [#bestofthewest](https://www.instagram.com/bestofthewest)

Growing up in the 1970s in suburban splendour in Dundas, within the Parramatta area, my personal **Best of the West** was a mix of rugby league, shopping malls, drive-in cinemas and BMX trails. Memorable experiences included exploring the 'convict caves' under Lennox Bridge, cheering for the Eels in the old grandstand at Cumberland Oval, riding horses in Smithfield paddocks, watching Star Wars at the Roxy, family trips to the African Lion Safari at Warragamba and cooling off in Lake Parramatta.

There were no universities in the West so I battled the tyranny of two trains and a bus to get to Sydney Uni – wedged in between a dawn start at Homebush Abattoir for work and back to my girlfriend's home at the Westmead Nurses quarter at night. Most of my school mates from Cumberland High took up a trade, not a degree, as knowledge jobs were few and far between. As for fine dining, a flash feed for us was the Chinese Restaurant at Wentley Leagues, a charred steak at the Black Stump or takeaway from the first local Maccas at Northmead.

How times, and Western Sydney, have changed.

I am proud to have grown up a Westie, to have enjoyed the wide open space and the egalitarian society that nurtured me. However, I am even more proud of what my hometown has become, how it has embraced so many diverse cultures and matured into the magnificent place it is now... and will continue to become as growth continues at pace.

I hope you enjoy our little snapshot of the truly great parts of Greater Western Sydney and I hope that you will help us make the next edition even greater, with your own experiences and hidden gems.



"Go the Eels!"

Christopher Brown AM, Chairman (and Molly)
Western Sydney Leadership Dialogue

INTRODUCTION



“

THE RAW TALENT AND PASSION THAT'S ON SHOW AT THE MONTHLY BANKSTOWN POETRY SLAM IS SOMETHING THAT EVERYONE SHOULD EXPERIENCE. A TRULY GREAT PLATFORM HELPING YOUNG KIDS FIND THEIR VOICE AND TELL THEIR STORIES. CLICK, CLICK, CLICK.”
#bestofthewest

- Christopher Brown

Image: Sara Mansour, Bankstown Poetry Slam, Out There Summit, 2016

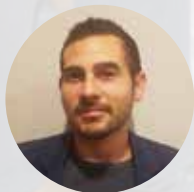
Trying to pull together the best bits of Greater Western Sydney was both an easy, and difficult task for the Dialogue. With such a vast array of cool things to see or experience, billions of dollars worth of projects that have, or are about to shape the future of the region, and a long storied history, coming up with content for **Best of the West** was never going to be an issue.

The challenge was how best to consolidate all the things that make it so great, to highlight the adventures, opportunities and gems that sit behind the surface, while trying not to miss anything!

In addition to identifying the ingredients that make the region so special, one of the key aims of this publication was for it to proudly promote the Greater Western Sydney story, hopefully so that new audiences can better understand its past, its present, and why so many people are invested in its future.

This first edition of **Best of the West**, while comprehensive, is not definitive, and we see this as just the start of a broader and longer conversation that continues to shine the light on the region. Through our online and social media channels, the Dialogue is engaging with our audiences through **#bestofthewest** as a way to celebrate and promote the very best of the region, and we want to hear from you!

Special thanks to all the organisations and groups that have contributed to this publication, in particular the Dialogue team which has worked tirelessly, for many months, to produce a document that makes the region proud.



Adam Leto, Executive Director
Western Sydney Leadership Dialogue

“

THE WORK THAT MAYOR CHAGAI AND THE SAVANNAH PRIDE TEAM, OUT AT BLACKTOWN, IS DOING TO HELP NURTURE AND PROVIDE OPPORTUNITIES FOR YOUNG MEN TO IMPROVE THEIR LIVES IS INSPIRING STUFF.”

#bestofthewest

- Adam Leto

WHAT HAVE WE MISSED?
#bestofthewest

Image: Street Art Walk, Katoomba

GREATER WESTERN SYDNEY

- Fourth largest economic zone in Australia.
- Nearly 40% of all new jobs in Sydney over the next 20 years will be in Greater Western Sydney.
- Over two-thirds of the population is of working age (between ages of 15 and 64).
- The biggest sector for professional workers is health – also one of the fastest growing.
- Within the next 30+ years the population of Western Sydney will be similar in size to Melbourne (4m people).
- 38% of the Western Sydney population speak a language other than English at home.
- The Westmead Health Precinct is one of the largest health, research and education precincts in the world.
- Western Sydney University is ranked among the top 3% of universities in the world.
- Currently, 70% of doctors trained at Western Sydney University's School of Medicine located at Campbelltown, stay and practice medicine in the city and surrounding region.



"NOTHING QUITE BEATS THE BRIDGE TO BRIDGE WALK (IN PENRITH) FOLLOWED BY A COFFEE AND PICNIC ON THE BANKS OF THE NEPEAN RIVER."
#bestofthewest

- Hon. Stuart Ayres MP
NSW Minister for Jobs, Investment, Tourism
Minister for Western Sydney
Member for Penrith

Image: Yandhai Nepean Crossing, credit Stuart Ayres MP, Twitter

CONTENTS

01 Leisure & Lifestyle

Cool stuff that gets you moving and excites the senses.

14

02 Events & Experiences

The must-do local experiences.

46

03 Education & Innovation

Key centres that are helping shape the next generation of talent and smart jobs.

74

04 Infrastructure, Business & Development

The major projects and businesses supporting and fueling the growth of Greater Western Sydney.

94

05 Environment

Explore some of the region's natural beauties.

122

06 History

Take a closer look at some of the region's iconic (and hidden) heritage.

138

Image: Mount Annan Botanic Gardens

01 LIFESTYLE & LEISURE



ABLA'S PASTRIES
 AL ASEEL
 AQUATOPIA
 AUBURN GIANTS
 AWAFI CHICKEN
 BANKSTOWN SPORTS CLUB
 BELMORE SPORTS & RECREATION PRECINCT
 BILLU'S
 BLACKTOWN INTERNATIONAL SPORTS PARK
 BRYAN BROWN THEATRE
 CABRAMATTA RETAIL AND DINING
 CAMDEN LAKESIDE GOLF COURSE
 CAMPBELLTOWN ARTS CENTRE
 CAMPBELLTOWN CATHOLIC CLUB
 CANTERBURY OLYMPIC ICE RINK
 CARNES HILL CENTRE FOR EXCELLENCE
 CHOPHOUSE
 CIRCA ESPRESSO
 EAT STREET PARRAMATTA
 EL JANNAH
 FEATHERDALE WILDLIFE PARK
 FRANK'S LEBANESE
 GO-SHU AUSTRALIAN SAKE
 HAWKESBURY PCYC
 HAWKESBURY RACE CLUB
 HENRY MARC
 HOLY BASIL
 INGLIS WARWICK FARM
 INTERNATIONAL SHOOTING CENTRE

JOHN NEWMAN POOL
 MACARTHUR SQUARE
 MACARTHUR TURF FARMING
 MACQUARIE ARMS HOTEL
 MARCONI CLUB
 MOUNT DRUITT INDIGENOUS CHOIR
 PARRA LEAGUES MICRO BREWERY
 PENRITH PACEWAY
 PENRITH PANTHERS
 PENRITH REGIONAL GALLERY
 PHO AN
 RAGING WATERS SYDNEY
 REAL TURKISH DELIGHT
 RIVERSIDE THEATRES
 SAVANNAH PRIDE
 ST JOHNS PARK BOWLING CLUB
 SYDNEY GYMNASTICS AND AQUATIC CENTRE
 SYDNEY INTERNATIONAL EQUESTRIAN CENTRE
 SYDNEY OLYMPIC PARK SWIMMING CENTRE
 SYDNEY ZOO
 TEMASEK
 THE FIDDLER
 THE JOAN
 VALENTINE SPORTS PARK
 WHITEWATER STADIUM

LIFESTYLE & LEISURE

BELMORE SPORTS & RECREATION PRECINCT

*P*lans are underway to breathe new life into this sports precinct, which houses Belmore Sports Ground, the spiritual home of the Canterbury-Bankstown Bulldogs and their current training headquarters. While the Bulldogs might only play the occasional NRL fixture at Belmore, the precinct, which includes Terry Lamb Reserve and Peter Moore Fields (named after local legends) is still a popular recreational space for visitors and will no-doubt be even more popular once its upgrade is complete.

VALENTINE SPORTS PARK

*H*Q for NSW's round ball game, Valentine Sports Park on Old Windsor Road, is the perfect place to get active. Wrapping along the boundary of Blacktown, like a swinging free kick, the synthetic green grass glows under lights by night and shines, in all-weather, by day. The multi-sports complex includes Football NSW's administration centre and is home to both amateur and elite-level competition.

CAMDEN LAKESIDE GOLF COURSE

*T*he only course in Sydney to be designed by five times British Open winner Peter Thomson AO CBE and his design partners, Ross Perrett and Mike Wolveridge – this links course embraces traditional golfing heritage and was judged one of the top five courses in Sydney.

BLACKTOWN INTERNATIONAL SPORTS PARK

*H*ome to a variety of codes, and the training base of the Western Sydney Wanderers, this athletics hub was sprinkled with Olympic magic dust during the 2000 Games when it hosted the baseball and softball events.

When it's not being used as the home ground for the Sydney Blue Sox, it also houses the annual Autumn Harvest Festival and Aussie Night Markets.

LIFESTYLE & LEISURE

HAWKESBURY PCYC

In 2018 the State Government created a \$13m Police and Citizens and Youth Club in Hawkesbury to engage kids and ensure they are connected and inspired to stay involved as members of their community. Under construction is a fitness and wellness centre, multi-purpose areas, inside and outdoor courts, as well as gym facilities.

FEATHERDALE WILDLIFE PARK

Feed a kangaroo, or encounter a koala, either way, Doonside's Featherdale Wildlife Park connects visitors to native wildlife.

Keep an eye out for the 4.5m salt-water crocodile, enjoy the open-air amphitheaters which host interactive games and presentations or giggle at the posture of little penguins, wombats and bilbies. Featherdale has been the backbone of the local tourism industry for decades.



SYDNEY ZOO

SYDNEY ZOO

Western Sydney's latest visitor experience, is home to a range of exotic and Australian animals.

Set within the Western Sydney Parklands at Bungaribee Park, this brand-new, world-class zoo, blends innovation into a new approach to animal welfare. Due to open its doors in 2019, you can visit via the M4 and M7.

Images: Artist's impression of Sydney Zoo (pictured) which is set to open in 2019 and provide a whole new visitor experience for the region



SAVANNAH PRIDE

Savannah Pride is a basketball program based at Blacktown PCYC which has been set-up to provide a healthy outlet for local youth via a combination of sport and education.

Originally targeting youth in the South-Sudanese community, some of the key aims are to help improve confidence and develop the life-skills for youngsters to succeed off the court. USA big-wigs from the NBA have recruited three rising stars from the program to attend ***Basketball without Borders*** overseas camps.

International and Australian elite level players are bred here for professional clubs, while a host of US schools have also dangled scholarship opportunities to the most talented and hardworking members. Since it's inception in 2005 in excess of 1,000 smiling alumni prove the best endorsement for this inspiring factory of happiness.

Founder of Savannah Pride, Mayor Chagai was awarded the Western Sydney Leadership Dialogue's Pemulwuy Prize in 2018 recognising his outstanding regional leadership.

LIFESTYLE & LEISURE

BRYAN BROWN THEATRE

What better way to honour one of Panania's favourite sons and one of Australia's most revered actors. Bankstown's Bryan Brown Theatre hosts performances all year-round, with established and emerging artists appearing both here and at Bankstown Arts Centre. Since 2011 the Theatre, a five minute walk from the station, provides support and reduces barriers to arts engagement for performers and audiences alike.

MACARTHUR SQUARE

Adjacent to Macarthur railway station, this centre was built by Lendlease and opened in 1979. Its \$160m expansion in 2005, followed by further works in 2017, make it one of the biggest shopping centres in Sydney.

MACARTHUR TURF FARMING

The place where the grass is always greener, the Macarthur region is renowned for its turf farms, particularly at places like Cobbitty.

If you've got a backyard in Sydney, there's a good chance your lawn has been sourced from this part of the world - or from its north-west neighbours at Windsor.

CANTERBURY OLYMPIC ICE RINK

Canterbury Olympic Ice Rink is the place to party, skate, disco and gather bruises after yet another funny fall. The 300-seat not-for-profit Olympic-sized rink brings Canterbury Eagles Ice Hockey Club together with fans of Torvill and Dean.

CAMPBELLTOWN ARTS CENTRE

Campbelltown Arts Centre is one of the region's most progressive arts centres and a major player in Greater Western Sydney's growing cultural scene. While you sip coffee in the café, you can plot a tour of a traditional or modern gallery space, try a workshop, perform in-studio or tour the outdoor Japanese Gardens and Koi Pond.



Image: Campbelltown Arts Centre

BANKSTOWN SPORTS CLUB

*B*ankstown Sports Club has to be seen to be believed, offering an assortment of different dining and entertainment options, and plenty of things for the kids to do.

Unlike most clubs, this one includes not only a separate hotel, but a 9-storey commercial office tower – the Bankstown Flinders Centre – not to mention a UFC gym, childcare, medical centre and bank.

Image: Flinders Centre and Bankstown Sports Club

LIFESTYLE & LEISURE

EL JANNAH

When it comes to charcoal chicken it doesn't get better than El Jannah. Its Granville store is a local institution, attracting visitors from all over Sydney keen to sample the smoke-filled flavours that have made it so popular. Its success has led to even more stores popping up in the region, including Campbelltown, Blacktown, Punchbowl and Penrith.

AWAFI CHICKEN

Quality food and a clean car is the stuff of dreams for busy commuters, especially if small people are strapped in, but at Awafi Chicken & car-wash in Revesby you will get both. Drip the garlic sauce down your chin as you munch on charcoal chicken then let the new car smell cover the evidence.

PHO AN

Choosing your meal is easy when there is one choice. Sydney foodies visit Bankstown to sample Pho An's famous Pho. Specially prepared rice noodles topped with beef or chicken, fresh picked herbs, bean sprouts and served in a steaming hot secret broth, Pho An's Pho is so famous it's the ONLY dish served. Request a variation? **No Pho for you!**

Image: Bankstown Bites



ABLA'S PASTRIES

For 365 days of the year Abla's Pastries serves world class Lebanese sweets. The Granville store, in operation for 30 years, has established itself as the best of its kind in Sydney. It's even open until 1am, all year-round, meaning sweet-tooths can get their fix pretty much whenever they need.

AL ASEEL

One of the local favourites, this Greenacre eatery regularly attracts visitors from all over Sydney. You'll be hard-pressed to find a better sample of Lebanese cuisine this side of Beirut.

REAL TURKISH DELIGHT

Known by sweet-tooths locally as RT, Real Turkish Delight in Auburn is steeped in history.

Brothers Eddie and Bill follow in the footsteps of their father Bahattin Pektuzun who crafted the secret recipe without the aid of modern kitchen appliances. Customers buy 130 tonnes of Turkish Delight here annually.



LIFESTYLE & LEISURE

FRANK'S LEBANESE

Franks Lebanese is one of the South West's longest running no-frills lunch and dinner venues. This Fairfield restaurant might be short on style, but it's definitely big on taste!

HOLY BASIL

Smack bang in the middle of one of the area's latest, and busiest night-time hangouts, this Canley Vale Road icon has established itself as one of the best Thai restaurants in town!

Image: Bankstown Bites

**BEST of
the WEST**

CABRAMATTA RETAIL & DINING

Known as Sydney's very own Little Saigon, Cabramatta is the hub of Australia's Vietnamese community. Offering fresh and eclectic crowds, food and fun visitors and locals alike can live out a foodie's dream. Amongst the laneway vibe and market place eateries, you'll find a host of steaming, spicy and surprising culinary hot spots.

Not only the best place to shop and eat, but to also get a sense of one of the most welcoming and exciting places in Greater Western Sydney, bring your shopping bags and leave with your arms (and belly) full of food.

MARCONI CLUB

At its peak during the 80s and 90s this famous Bossley Park club was the place to be on a Friday or Saturday night, providing party-goers, football fans and families with plenty of entertainment – particularly on game nights when the once mighty Marconi Stallions were flying high during the National Soccer League.

The action may have quietened a little in recent times, but the club, established by Italian migrants in 1958, still provides plenty of options for those looking for a bite, laugh, dance or to even play bocce!

ST JOHNS PARK BOWLING CLUB

A powerhouse on the national and international lawn bowls scene, this local south-west club has not only produced some serious talent, but hosted the World Singles Champion of Champions or the 'World Cup of Lawn Bowls' in recent years attracting international visitors from across the globe.

RAGING WATERS SYDNEY

*L*aughter and smiles bubble from Raging Waters Sydney (formerly Wet 'n' Wild) in Prospect, where motorists on the M4 can spot the towering labyrinth of colored tubes. Group discounts and advanced bookings let water babies of all ages soak up the smiles. Relax in a private cabana or ride the myriad of slides, sample a range of dining options or watch a character show.

SYDNEY OLYMPIC PARK SWIMMING CENTRE

*S*wim a lap, take a slide or warm up in a sauna. All abilities can enjoy the surrounds of this elite world class venue, which played host to some of the most memorable Sydney Olympics' events. Tour the halls and soak up the history of Australia's super-fish while tomorrow's champions thrash their way around the whirlpool.

Image: Raging Waters Sydney (formerly Wet 'n' Wild)

AQUATOPIA

Aquatopia is Fairfield City's affordable and fun water park. It is home to the adventure aqua tower featuring 79 fun individual elements and the toddler pool. Older members of the family can enjoy the 20m tall high-speed thrill slides, the 10m slides, Wave Rider and the Fishpipe.



WHITEWATER STADIUM

Penrith Whitewater Stadium, purpose built for kayak and canoe slalom training, hosted the 2000 Olympics and is open to water sports enthusiasts and anyone from the public after a splash and giggle. The only man-made river of its kind in the southern hemisphere, it's a great place to watch, raft and learn rescue in the safety of a controlled environment.

LIFESTYLE & LEISURE

MACQUARIE ARMS HOTEL

For 200 years the Macquarie Arms Hotel at Windsor has welcomed locals and weary travellers alike. Arguably Australia's oldest pub, across from Thompson's Square on the main road, is filled with country-style hospitality. Expect an open fire and beer garden vibe over a meal and drinks.

INTERNATIONAL SHOOTING CENTRE

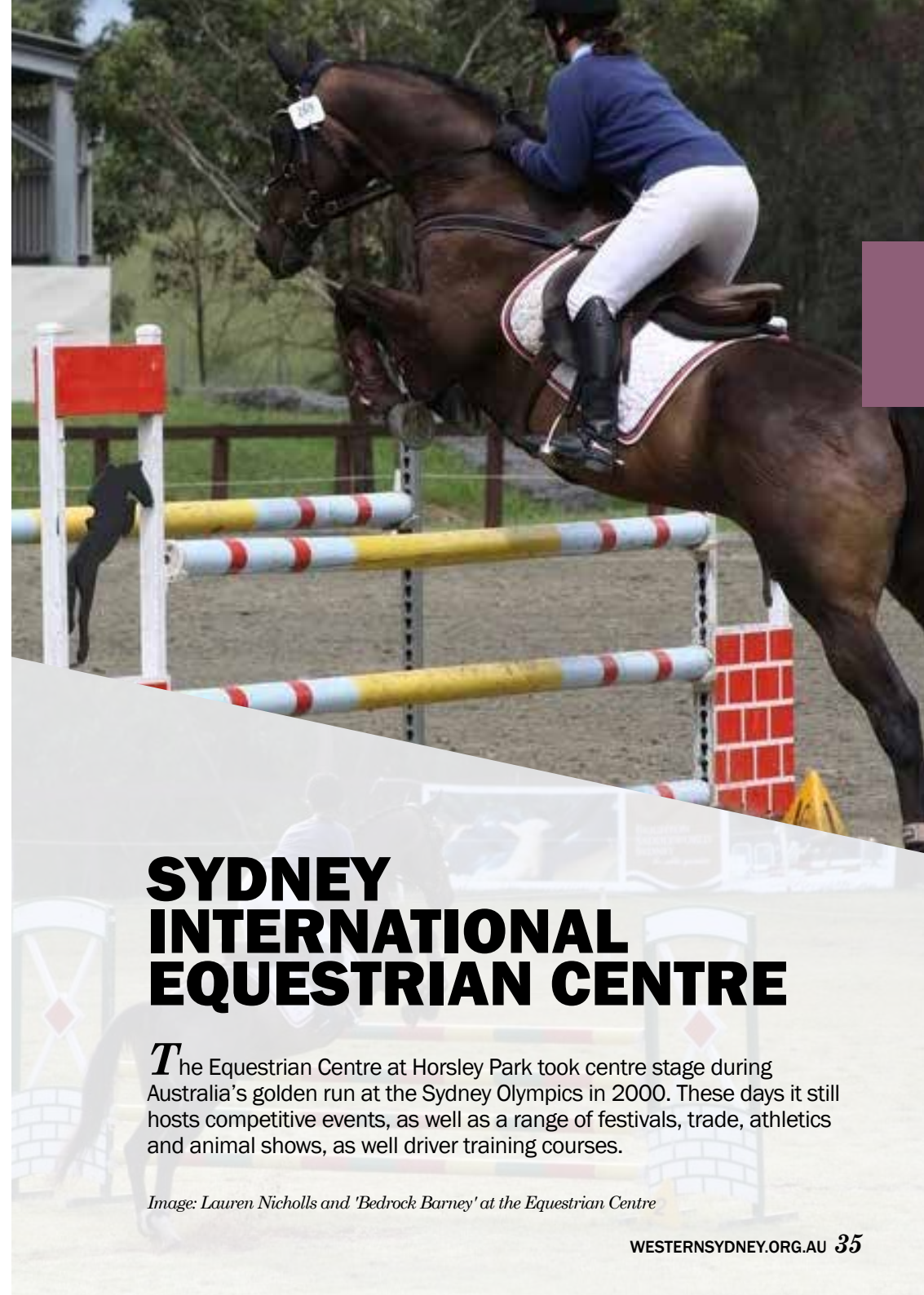
The Sydney International Shooting Centre in Cecil Park, where Michael Diamond won gold for Australia during the 2000 Olympic Games still hosts national and international target shooting competitions, featuring a 10, 25 and 50m range.

PENRITH PACEWAY

A night at the 'trots' might not be everyone's cup of tea, but if you're a fan of harness racing in downtown Western Sydney, this is your spot!

HAWKESBURY RACE CLUB

With a backdrop of the Blue Mountains, Hawkesbury Race Club is more than a thoroughbred destination. The venue is home to festivals, exhibitions and a range of events, including the annual Blue Datto Gala Dinner, established to help raise funds for its young driver awareness programs.



SYDNEY INTERNATIONAL EQUESTRIAN CENTRE

The Equestrian Centre at Horsley Park took centre stage during Australia's golden run at the Sydney Olympics in 2000. These days it still hosts competitive events, as well as a range of festivals, trade, athletics and animal shows, as well driver training courses.

Image: Lauren Nicholls and 'Bedrock Barney' at the Equestrian Centre

LIFESTYLE & LEISURE

CIRCA ESPRESSO

Once voted by the *SMH Good Food Guide* as Sydney's best, this hole-in-the-wall café serves up what many believe is the best coffee in Parramatta, while their breakfast and lunch menu also excites. It may be small in size, but it's big on flavour!

THE FIDDLER

Since 1826 The Mean Fiddler has been THE talking point and watering hole in Rouse Hill for a variety of reasons. The new owners have renamed the venue, dropping the "mean", and offered even more fresh air, light, designer spaces, accommodation and food options than ever before.

EAT STREET PARRAMATTA

The al fresco dining strip on Church Street Parramatta is better known as 'Eat Street'. A lane in either direction, bordered by hedges separating passing traffic from the outdoor dining areas the alfresco Italian pasta, renowned Singaporean Laksa or Indian Dahl, Persian Ghaimah or Greek Souvlaki tempts the taste buds.

TEMASEK

More of a sparkling diamond than a hidden gem, regular, glowing *Good Food Guide* reviews have made this one of the most popular restaurants in Parramatta. Malaysian dining at its finest, it might be tucked away, but hungry diners have no problem lining up for its famous Laksa and Nasi Goreng.

GO-SHU AUSTRALIAN SAKE

Sake has been known since the dawn of Japanese civilisation and probably since rice was first introduced more than 2,000 years ago. The GO-SHU Australian Sake Brewery, based at Penrith, exports sake to the world.

BILLU'S

Harris Park is certainly known for its authentic South-Asian cuisine, and few rival Billu's. His Indian restaurant has developed a cult-following all over Sydney and if you're keen for a spicy night out, this is your place.

HENRY MARC

Henry Marc has raised the stakes when it comes to local, classy, but casual dining, with this popular Penrith eatery a hit with hipsters and families alike.

CHOPHOUSE

The rustic and sizzling Chop Chop sign lights up the night sky along Parramatta's Macquarie Street. The classic steak frites stands its ground against the best in the world.

PARRA LEAGUES MICRO BREWERY

Established in its current form in 2018, Jacks Brewery is a full mash brewery dedicated to the creation of pure, natural and craft beers. In 1959 it was originally named and dedicated to two men, both named Jack strangely, who built and helped form the Leagues club.

Image: Circa Espresso, by Carla Dibbs

LIFESTYLE & LEISURE

SYDNEY GYMNASTICS AND AQUATIC CENTRE

Smell the sweat and chlorine at Sydney Gymnastics and Aquatic Centre at Rooty Hill. No standing rules apply under the super-sized roof of this world class venue. In addition to the two 25m heated pools, the purpose-built gymnastics facilities are the biggest in the southern-hemisphere.

JOHN NEWMAN POOL

The Olympic-sized pool at Prairiewood Leisure Centre is named after the Cabramatta MP who was tragically killed in his driveway in 1994 – the first political assassination in the country.

INGLIS WARWICK FARM

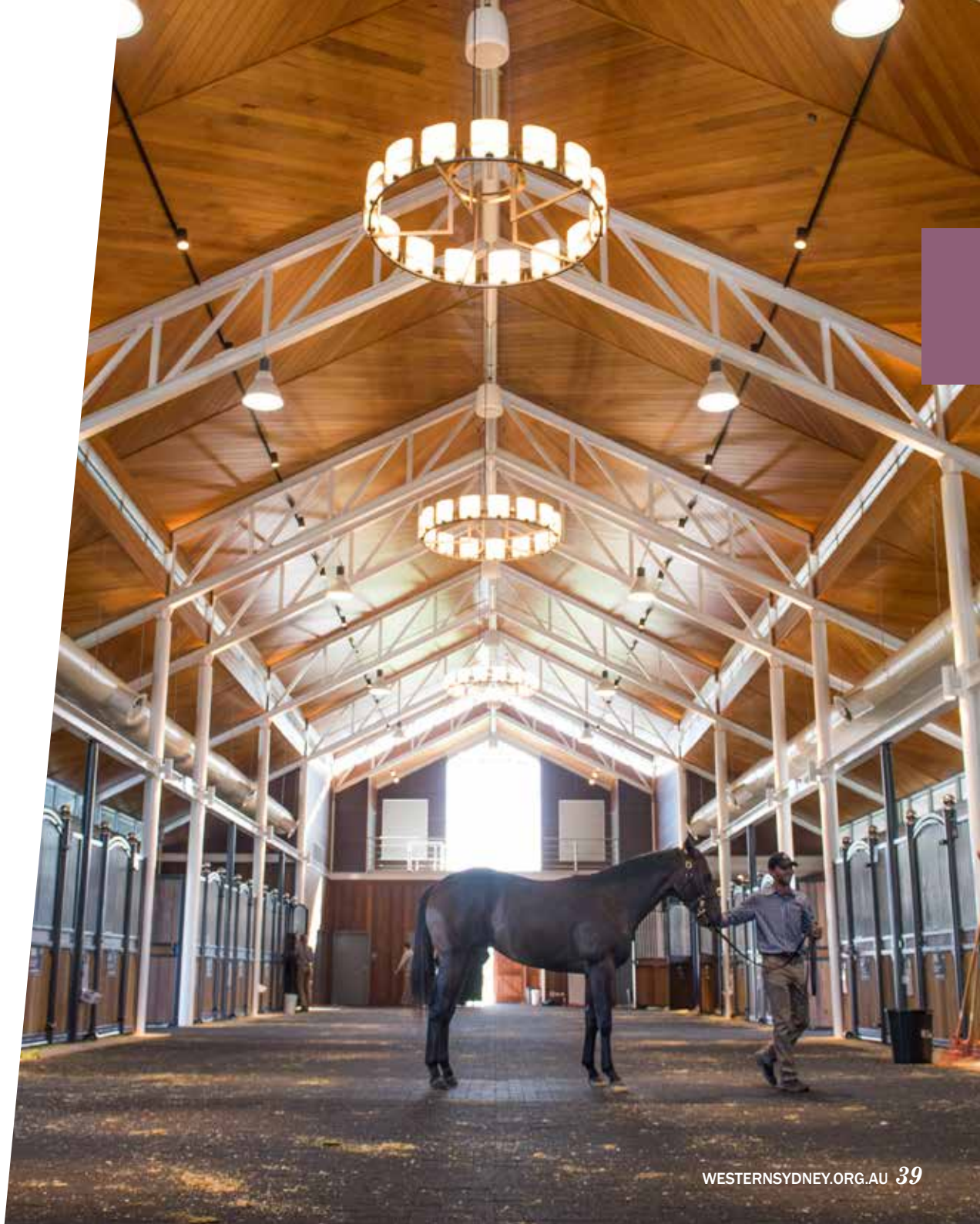


Purpose-built hotels, stables, training and entertainment facilities created by Inglis Thoroughbred Bloodstock Auctioneers wrap around the Warwick Farm Racecourse and have made this \$140m development one of the premium hospitality venues in the region.

Rooftop bars, entertainment precincts galore and swish accommodation mean it's harder than ever before to remember racing is about the horses.

In 2018 it was awarded *Project of the Year* at the Dialogue's annual Boomtown! Infrastructure and Property Summit.

Images: Inglis Warwick Farm



LIFESTYLE & LEISURE

PENRITH REGIONAL GALLERY

Penrith Regional Gallery is set on the western bank of the Nepean River at the foot of the Blue Mountains at Emu Plains. Established in 1981 it is the former home and property of sculptor Gerald Lewers and painter Margo Lewers and welcomes endless visitors who delight in its dynamic exhibitions, events, education programs, enchanting gardens and relaxed café.

Image: Penrith Regional Gallery

CARNES HILL CENTRE FOR EXCELLENCE

Located on the corner of Kurrajong and Cowpasture Roads, Hoxton Park, the social, cultural and recreational facilities include an indoor recreation centre (including gym), library, public plaza with a water feature, skate park, children's playground, outdoor multipurpose sports courts (tennis/basketball/volleyball), community centre, picnic area, café, half-court basketball courts, and cycling and walking paths.

CAMPBELLTOWN CATHOLIC CLUB

A mainstay in the local community for more than 50 years, the 'Catho' as it is affectionately known, is a popular meeting place for residents, with a range of dining and entertainment options on offer. In 2007 the club opened the adjoining Rydges Hotel, which has not only proved popular for local businesses, but attracted corporate events and visitors from across Sydney.

MOUNT DRUITT INDIGENOUS CHOIR

The Mount Druitt Indigenous Choir has been appearing on stages across Australia since 2010. This choir is a strong and important lever offering national exposure, with audiences ranging from the Governor General through to senior citizens and local families.



RIVERSIDE THEATRES

The Riverside Theatres are a central part of the dynamic Parramatta entertainment precinct, flanked by the city's bustling, restaurants, bars, cafes, hotels and soon-to-be built Powerhouse Museum. The multi-venue performing arts centre hosts over 1,000 live performances annually, making it one of the busiest venues in Sydney, and is about to undergo a \$100m redevelopment.

Image: Riverside Theatres



THE JOAN

The Joan Sutherland Performing Arts Centre, known simply as **The Joan**, is the arts fulcrum for regional artistic culture and performance. The generosity of spirit here matches the soprano tones of its namesake. Every artistic culture is on show amongst the galleries, theatres and open entertaining spaces. Home to the Penrith Conservatorium of Music, every note is tuned and polished to perfection.

Image: The Joan

PENRITH PANTHERS

When you think of Penrith, it's hard not to think of the Panthers. The rugby league heavyweights, which have spawned not just a club, but an entire precinct, are the biggest name in town.

The Panthers Club, on Mulgoa Road, across from Penrith Stadium, continues to grow, and is currently home to a number of restaurants, bars, a hotel, recreational centre and an events centre. Current plans for the broader precinct, estimated to cost around \$500m, include a new residential complex, delivering 850 apartments, as well as serviced apartments and a community and conference centre.

AUBURN GIANTS

The Auburn Giants is an Australian Rules club formed in 2011 by local AFL fan and player Amna Karra-Hassan. Amna's aim was to help women and girls develop skills and fitness, improve their self-esteem and confidence, and provide opportunities for them to volunteer or become qualified in coaching, first aid or management. The club assists women to make a positive contribution to the community through their AFL involvement and now largely serves as a breeding ground for the GWS Giants AFLW team. This transition to the women's 'big league' is a credit to Amna's role as a pioneer who championed AFL in the region.

02

EVENTS & EXPERIENCES

AFRICULTURES FESTIVAL
AUBURN GALLIPOLI MOSQUE
AUSTRALIA DAY AT
PARRAMATTA PARK
BANKSTOWN BITES FESTIVAL
BANKSTOWN POETRY SLAM
BANKWEST STADIUM
BLUE MOUNTAINS
BLUE MOUNTAINS
BOTANIC GARDENS
CAMDEN JACARANDA FESTIVAL
CAMDEN SHOW
CASTLE HILL SHOW
DEEPAVALI FESTIVAL OF LIGHT
FISHER'S GHOST FESTIVAL
GIANTS STADIUM
GOLDEN SLIPPER DAY
AT ROSEHILL
HALDON STREET FESTIVAL
HAWKESBURY HARVEST

LAKEMBA MOSQUE
MINGYUE LAY
BUDDHIST TEMPLE
MOON FESTIVAL
NORTH PARRAMATTA MAPS
PARRAMATTA LANES FESTIVAL
PARRAMATTA POWERHOUSE
MUSEUM
QUDOS BANK ARENA
REAL FESTIVAL
SCENIC WORLD
SKYLINE DRIVE-IN
ST PATRICK'S CATHEDRAL
SYDNEY COLISEUM
SYDNEY MOTORSPORT PARK
SYDNEY MURUGAN TEMPLE
SYDNEY POLO CLUB
SYDNEY SHOWGROUND
SYDNEY ROYAL EASTER SHOW
URBAN THEATRE PROJECTS

EVENTS & EXPERIENCES

BANKWEST STADIUM

Sydney's newest stadium has opened to much public acclaim and is widely recognised as one of the best sporting venues in the country.

This rectangular 30,000-seater is firmly growing as THE place to watch live sport in the city and whether it's a derby-day clash between the Wanderers and Sydney FC or watching the Eels take on regional rivals, this is an experience that has to be seen to be believed.

For those keen to really immerse themselves in the match-day vibe, take a stroll down Eat Street to grab a bite beforehand, or a celebratory beer next door at Parra Leagues' Micro Brewery after the full-time whistle.



EVENTS & EXPERIENCES

REAL FESTIVAL

Penrith's Real Festival features live performances, art exhibitions, food, workshops and interactive displays every November, temporarily transforming the natural landscape along the Nepean River foreshore.

CAMDEN SHOW

A local highlight, a ticket to the Camden Show brings out the best of Sydney's rural fringe. Two days of 'ag' show activities every April, lets you meet a rural achiever, become a show girl, pat animals, watch motor-cross stars and even race a pig.

SYDNEY ROYAL EASTER SHOW

Farmers and thrill seekers, families and sweet hunters alike, all join in the fun annually at the Sydney Royal Easter Show. The largest ticketed event in the country is two weeks of hype, noise and for some, chook washing. Run by the NSW Royal Agricultural Society since 1822, the show perfectly balances the usual agricultural activities, like wood chopping, with more modern tests of will, such as the No Limit and Haunted House attractions.

AUSTRALIA DAY AT PARRAMATTA PARK

Australia Day is big in Parramatta. The all-day party features hot air balloons, vintage cars, workshops, rides and live performances, before culminating in a huge fireworks finale.



EVENTS & EXPERIENCES

SYDNEY SHOWGROUND

Sydney Olympic Park provides a wide range of facilities and venues for business events, conferences, exhibitions, sporting events as well as public recreational amenities. At the heart of this precinct is the Royal Agricultural Society's (RAS) Sydney Showground. The RAS, most known for its Sydney Royal Easter Show is currently working on plans to rejuvenate this precinct to deliver an enhanced customer experience, with increased activity and visitation, including Western Sydney's own convention and exhibition centre. Sydney Showground contributes around \$617m to the NSW economy each year.

Image: Sydney Olympic Park, artist's impression

EVENTS & EXPERIENCES

SYDNEY POLO CLUB

Sip Pims on the banks of the Hawkesbury at the Polo and you'll be experiencing one of Australia's most prestigious and historic venues. Sydney Polo Club hosts players and their mounts all year round for high-level tournaments as well as tourists, weddings among the stables, barns and waterways at what is considered one of the world's most striking clubs.

URBAN THEATRE PROJECTS

Western Sydney's premier independent arts organisation, Urban Theatre Projects has created over 115 new Australian works that have received awards and recognition internationally and nationally. From its roots in Bankstown, the small team of artists and creatives now has links to all parts of the region and in addition to its innovative approach to performance and storytelling, is also one of its strongest arts and cultural advocates.

DEEPAVALI FESTIVAL OF LIGHT

The Indian Festival of Light is celebrated by Indians all across Australia. Each year this festival draws a massive crowd to Parramatta, which is home to one of the biggest south-east Asian populations in Sydney. The Festival has been running for more than 20 years in Australia, and this year's event will be spread over two days in early November.

CAMDEN JACARANDA FESTIVAL

The Camden Jacaranda Festival sneaks in before silly season hits town and offers a two-day November escape to soothe any busy soul. Dine under the purple haze on Argyle Street and wander the markets – it's a colour-filled community affair.



Image: Camden Jacaranda Festival

EVENTS & EXPERIENCES

HAWKESBURY HARVEST

Food production in the Sydney Basin is alive and well and shopping local of course is a great way to cut your carbon footprint. Hawkesbury Harvest, along with several Harvest Farmgate Trails (get the app and you're away) run a Farmers' Market on the second Saturday, nearly every month.

Formed in 2000 the not-for-profit group is considered about the movement, market sales and production of food - and is leading the way when it comes to the promotion of the Hawkesbury's agricultural heritage.

CASTLE HILL SHOW

The forerunner to the annual Sydney Royal Easter Show, this popular local event, running over three days, provides an exciting and entertaining country experience, showcasing the area's agricultural history.

FISHER'S GHOST FESTIVAL

Named after arguably the most famous Aussie ghost (Frederick Fisher), the Campbelltown Fisher's Ghost Festival is a ten-day shindig of mammoth proportions. Street fairs, art shows, fireworks and craft stalls are a common sight. Uncover the mystery and find out where Frederick Fisher now lies!



Image: Fisher's Ghost Festival

EVENTS & EXPERIENCES

BANKSTOWN BITES FESTIVAL

Competitive cupcake eating, walking food tours and sampling almost any global cuisine as presented by some of Sydney top venues... Someone's got to do it, and annually it could be you at the Bankstown Bites Festival.

AFRICULTURES FESTIVAL

The biggest annual African Festival in Australia, this one-day celebration is held in Wyatt Park, Lidcombe with the aim of bridging the cultural gap between Africans and Australians, and features dance workshops, a soccer tournament, an African marketplace and plenty of entertainment.

NORTH PARRAMATTA MAPS

Find the only fully dedicated map shop in NSW at North Parramatta. Hard copy wall maps, paper topographic road and international maps, 3D-designed charts and world globes are some of the many products in stock.

Image: Moon Festival



MOON FESTIVAL

The smell of freshly cut grass in early September can mean many things to different people. If you're sporting inclined it's footy finals. In the case of culturally aware Cabramatta locals it's also prime time for a Moon Festival. Equinox – the day of the year when daylight and darkness are equal in length, is when Fairfield celebrates its cultural diversity. With one of the largest Asian populations in Sydney (32% of the non-English speaking community speak Vietnamese or a Chinese language) this annual festival is packed to the brim with activities that honour Cabramatta's diversity with food, cultural activities and displays. Wait up late to see a blast of fireworks to mark this very special occasion.

EVENTS & EXPERIENCES



SYDNEY COLISEUM

Take one of the 2,000 seats at the \$100m+ Sydney Coliseum which opens to the public in late 2019 and is expected to become one of the region's major cultural landmarks and theatrical homes. Whether you're a lover of great musicals, drama, dance, live concerts and performances, this new facility at Rooty Hill, and based within West HQ, has been billed as 'Western Sydney's Opera House'.



PARRAMATTA LANES FESTIVAL

Squeeze through the Parramatta Lanes Festival in October and you'll discover chefs, artists, performers and brewers that will put a smile on your face. The award-winning Spring festival consists of pop-up bars, disco tunes and retro roller skating among the many activities.

EVENTS & EXPERIENCES

SYDNEY MOTORSPORT PARK



Images: Sydney Motorsport Park

Pull up trackside at Sydney Motorsport Park, known as the home of Australian car racing.

Operated by the Australian Racing Drivers' Club, and based at Eastern Creek, the 92ha precinct is one of the busiest sites in Western Sydney, hosting more than 600 events and over 300,000 visitors annually. Now that it has secured permanent lights, through the NSW Government, Sydney Motorsport Park is in line to host an annual V8 Supercars Night Event – adding a whole new dimension to motorsports.

SMSP also has ambitious plans to develop a future innovation and tech-hub, using the famed Silverstone Race Precinct in the UK as its model.



EVENTS & EXPERIENCES



SKYLINE DRIVE-IN

One of the last remaining drive-ins in the country. The Skyline Drive-In at Blacktown has been revived as a cool and nostalgic place to enjoy a Hollywood blockbuster or classic flick. Uniquely retro bites, sights and sounds make for the perfect date night.

Image: Skyline Drive-In



HALDON STREET FESTIVAL

An Arabian bazaar-style street party makes the Haldon Street Festival in Lakemba the best place to spend Ramadan. Close to 10,000 people attend during weeknights, and on Saturdays roads are closed off for more than 30,000 people to celebrate their holy time with street food.

Image: Ramadan Nights 2019

EVENTS & EXPERIENCES

LAKEMBA MOSQUE

Australia's largest Mosque, and along with the newly built Punchbowl Mosque, are the two central places of worship for local Muslims who make up more than 20% of Canterbury-Bankstown's population. The new \$12m mosque at Punchbowl features 102 ornate maqaranas (domes) painted by a master Middle Eastern calligrapher.

MINGYUE LAY BUDDHIST TEMPLE

If you're seeking a path to enlightenment via Dhamma Talks, this is your place. This striking structure based at Bonnyrigg, can be spotted via Cabramatta Road, and serves a community that is one of the most multicultural in Australia.

AUBURN GALLIPOLI MOSQUE

More than 500 worshippers pray at Auburn Gallipoli Mosque daily with in excess of 2,000 people attending the weekly special Friday prayer.

ST PATRICK'S CATHEDRAL

Whoever said church has changed was right. You can take a 3D- virtual tour of Parramatta's striking cathedral on Marist Place online, but you'll have to be there in person to see mass. The current sandstone structure is the fourth one to stand on this site, having been rebuilt after it was destroyed by a tragic fire in 1996.

SYDNEY MURUGAN TEMPLE

Located just off the Great Western Highway at Mays Hill, this beautifully designed Hindu temple supports a large number of Indian-born locals - a demographic that has grown by more than 20,000 in Parramatta over the past five years.

BANKSTOWN POETRY SLAM

Whether it's a workshop, performance or get-together, the Bankstown Poetry Slam welcomes up to 300 people monthly. If you want to hear the true and proud voice of Western Sydney this remains the most positive place from which anyone is welcome to listen. Their annual Grand Slam, held in Sydney CBD and often a sell-out, has over the years, attracted thousands of guests and become one of the region's must-see events.



Image: Sara Mansour, Bankstown Poetry Slam, Out There Summit, 2016

EVENTS & EXPERIENCES

BLUE MOUNTAINS

The blue haze greeting visitors when they first glimpse this vast and diverse World Heritage area is a sight that can never be forgotten. Endless and jagged cliff tops, plus unbelievably fresh air, combine to fuel the natural beauty of the area's wonderful walking trails and breathtaking lookouts. Alternate transport via a steam train ride is an option worth considering in this area, which is full of significant aboriginal cultural sites. Walking among the flora, fauna and waterfalls and passing by the many outdoor and cultural experiences, make the Blue Mountains a world class destination. Its endless offerings and epic views contain more than two important bucket list items; The Thrée Sisters and the Giant Stairway, which have to be seen to be believed.

SCENIC WORLD

Located in the World Heritage listed Blue Mountains, Scenic World offers epic panoramas of wilderness, waterfalls, escarpment and Jurassic-era temperate rainforest. Memories in the making here.

BLUE MOUNTAINS BOTANIC GARDENS

Driving the Bells Line of Road towards the magnificent Mount Tomah is a scenic delight, with fruit picking orchards dotted along the way. The Blue Mountains Botanic Garden offers a packed calendar of events, educational workshops and exhibitions, available to book prior to arriving at the garden. They offer novice botanists a chance to see the beautiful plants but also to learn. Plant diagnostic services offer free plant identification and botanical information to dedicated green thumbs who may use this garden as inspiration for their own creation at home.

Image: The Blue Mountains Cultural Centre's Artisan Twilight Market is a popular attraction for locals and visitors

EVENTS & EXPERIENCES

GOLDEN SLIPPER DAY AT ROSEHILL

With a steady line up of racing throughout the year, the Australian Turf Club's Rosehill Gardens transforms annually over autumn into the mecca of world racing when it hosts the Golden Slipper, one of the biggest races on the Australian racing calendar and the richest two-year-old race in the world. Immaculate gardens surround the 2,048m track and it's sweeping turns make this premier racecourse one of Australia's most picturesque.



QUDOS BANK ARENA

If you're nearby to Qudos Bank Arena for a Sydney Kings basketball game, or a Giants or Swifts netball match, you'll hear a decibel level roar comparable only to New York's Madison Square Garden. Fans peer perilously from sharply tiered seats, toward central screens and watch the corporates in soft seats gaze at the children employed to rub sweat from the court surface when the big bodies fall hard.

The arena is also the primary concert venue in Sydney, for everything from rock to country and from gospel to rap, allowing Western Sydney to enjoy music in perfect comfort.

GIANTS STADIUM

The Giants Stadium, which recently introduced an eco-friendly cup system for punters, remains family friendly and close to public transport and dining inside and around the ground. When it's not hosting AFL fixtures, the venue is also home to the Sydney Thunder which compete in the annual, and increasingly popular, Big Bash League Twenty20 cricket competition.

Image: Rosehill Racecourse

EVENTS & EXPERIENCES

*T*he Powerhouse Museum (Museum of Arts and Applied Science) will soon arrive at its new premises in Parramatta, relocated from CBD Sydney, and will be the largest museum in NSW when doors open to visitors in 2023. Key features of the new Powerhouse Museum include 18,000sqm of exhibition space, dedicated play areas and education labs devoted to science, technology, engineering, arts and mathematics. The site will include state-of-the-art exhibition halls capable of hosting major international interactive exhibitions and art displays, along with Australia's largest planetarium.

PARRAMATTA POWERHOUSE

03

EDUCATION & INNOVATION



ANIMAL RE-HOMING CENTRE
ARTHUR PHILLIP HIGH SCHOOL
ASSYRIAN SPIRIT
AUSTRALIAN CATHOLIC
UNIVERSITY
BANKSTOWN-LIDCOMBE
HOSPITAL
CAMDEN PRIVATE HOSPITAL
CAMPBELLTOWN HEALTH &
EDUCATION PRECINCT
INGHAM INSTITUTE FOR
APPLIED MEDICAL RESEARCH
JAMES RUSE
AGRICULTURAL HIGH
KIMBERWALLI CENTRE
LIVERPOOL HEALTH &
INNOVATION PRECINCT
MT DRUITT TAFE
PARRAMATTA NORTH/
WESTMEAD SYDNEY UNIVERSITY
CAMPUS
POWERHOUSE YOUTH THEATRE
STORY FACTORY

SYDNEY SCIENCE PARK
SYDNEY UNIVERSITY'S
VETERINARY CLINIC
THE QUARTER
UNIVERSITY OF WOLLONGONG
LIVERPOOL
WESTERN SYDNEY UNIVERSITY
BANKSTOWN CBD CAMPUS
WESTERN SYDNEY UNIVERSITY
HAWKESBURY
WESTERN SYDNEY UNIVERSITY
LAUNCHPAD PROGRAM
WESTERN SYDNEY UNIVERSITY
LIVERPOOL CBD CAMPUS
WESTERN SYDNEY UNIVERSITY
MACARTHUR CLINICAL SCHOOL
WESTERN SYDNEY UNIVERSITY
PARRAMATTA CBD CAMPUS
WESTFIELDS SPORTS
HIGH SCHOOL
WESTMEAD HEALTH & MEDICAL
RESEARCH PRECINCT

EDUCATION & INNOVATION

WESTERN SYDNEY UNIVERSITY PARRAMATTA CBD CAMPUS (PETER SHERGOLD BUILDING)

Rising in the heart of Parramatta this CBD campus of Western Sydney University was the first in an expanding family of vertical universities that are offering Greater Western Sydney's kids unprecedented access to localised higher education.

The Western Sydney University's philosophy is integration of education within a wider working environment: me (student), we (university), them (community). The Parramatta building blends best practice high-rise design and construction with cutting-edge tertiary course delivery and physical and digital connectivity. Vertical floors centre around an atrium, while student and academic spaces are linked via multiple stairways, ramps, lifts and walkways.

The thriving corporate and commercial surrounds make this a truly contemporary higher learning environment for the third millennium.

MT DRUITT TAFE

Dine at Mt Druitt TAFE & Hospitality School CreAte, where you can eat to support Australia's next master chefs as they test recipes in a restaurant setting.

Image: The Peter Shergold Building at Parramatta was Western Sydney University's first CBD campus



EDUCATION & INNOVATION

WESTERN SYDNEY UNIVERSITY HAWKESBURY

Western Sydney University Hawkesbury campus, also known as Richmond, is where you can get your hands dirty while learning enough to take on the world. The site includes research labs, farmland, equine facilities, residential halls and cottages, and is one of the most attractive campuses in Sydney.

WESTERN SYDNEY UNIVERSITY BANKSTOWN CBD CAMPUS

Located just next door to Canterbury Bankstown Council, the Western Sydney University's Bankstown CBD Campus is set to re-shape the city and the way tertiary education is delivered in the south-west, when it opens in 2021. It might look like just a patch of grass and a car-park now, but this 2500sqm site will accommodate 7,000 students. At 16-storeys it could also include a mix of both education, corporate and creative tenants.

WESTERN SYDNEY UNIVERSITY LAUNCHPAD PROGRAM

A one-stop-shop for business and innovation support that is made up of facilities, assistance and resources for startup and high-growth technology based businesses in the region. Launch Pad supports a new model of work and life by offering help to businesses through modern collaborative work and meeting spaces, specialist business advice, mentoring, events, networking, training and education.

WESTERN SYDNEY UNIVERSITY LIVERPOOL CBD CAMPUS

Opened in 2018 and named 'Ngara Ngura' this campus at 100 Macquarie Street, in the heart of Liverpool, spans nine floors and accommodates up to 2,500 students, with a focus on nursing, social work, anthropology, criminology and policing programs.

It was the second Western Sydney University CBD campus to be developed by the university and builds on the success of the Peter Shergold Building in Parramatta.

Image: Western Sydney University Liverpool Campus

EDUCATION & INNOVATION



LIVERPOOL HEALTH AND INNOVATION PRECINCT

Liverpool Innovation Precinct is anchored by Liverpool Public Hospital, Australia's largest standalone hospital. It also includes Sydney Southwest Private Hospital and Ingham Institute of Applied Medical Research. The precinct is also home to three university campuses and there is talk of a private hospital also being based within the site. In 2018, the NSW Government committed \$740m towards the development of this precinct with the aim of making it one of the world leaders when it comes to clinical and medical research. The precinct is already one of the major employers in the area and much like its cross-town counterpart at Westmead, is expected to be a significant jobs and education generator.



UNIVERSITY OF WOLLONGONG LIVERPOOL

Opened in 2017, the University of Wollongong Liverpool campus offers courses in most disciplines and is recognised globally for education, and locally for its centralised building which is undergoing extension in the heart of the city. It is expected to launch in 2020.

AUSTRALIAN CATHOLIC UNIVERSITY

The Australian Catholic University (ACU) has partnered with Blacktown City Council to deliver a new CBD campus that will be open for student enrolments in 2020. The campus, the first of its type in Blacktown, will provide greater opportunities for the 18,000 local tertiary students who are currently forced to travel out of the area to study. ACU is Australia's largest provider of graduate teachers and nurses and is ranked in the top 3% of universities worldwide.

EDUCATION & INNOVATION

WESTFIELDS SPORTS HIGH SCHOOL

Named Australia's first sports high school in 1991, the Westfields honour roll represents a who's who of sporting stars across a range of fields, featuring the likes of Adam Leto (who?), Jarryd Hayne, David Klemmer, Harry Kewell, Ellie Carpenter, Michael Clarke and Usman Khawaja, to name just a few!

This Fairfield West sports factory, which was opened by Gough Whitlam in the 60s, has produced more State of Origin rugby league players than any other school in the nation, while the 2018 Socceroos World Cup squad contained five Westfields Sports High products.

STORY FACTORY

A not-for-profit creative writing centre for marginalised youth aged 7-17, recently set-up-shop in Parramatta and has been doing an outstanding job working with local schools and community groups, improving childhood literacy, instilling confidence and providing opportunities for the region's kids to find their voice.

POWERHOUSE YOUTH THEATRE

A leading professional performance company in Greater Western Sydney, Powerhouse Youth Theatre places an emphasis on collaborative creativity that harnesses the limitless energy and optimism of the region's multicultural youth. This powerhouse of theatrical skills development, creative mentoring and theatrical innovation is also a great hub of community inclusion and cross-cultural engagement.



ARTHUR PHILLIP HIGH SCHOOL

Expected to open in late 2019, the state's first high-rise school at Arthur Phillip High will house 2,000 secondary students in the heart of Parramatta. At 17-storeys, the school has been developed to meet the growth in secondary student population in the area and will feature future-focussed learning areas and modern indoor and outdoor landscaped spaces. Definitely too cool for school!

Image: Arthur Phillip High School at Parramatta, artist's impression

EDUCATION & INNOVATION

INGHAM INSTITUTE FOR APPLIED MEDICAL RESEARCH

A world-class facility established to specifically respond to the health needs of south-west Sydney, the Ingham Institute, through its partnerships with hospitals, universities and the community, has developed a global reputation as one of the world leaders in medical research.

Over the years it has initiated world-first trials in the treatment of cancers and is also home to the world's only cancer-scanning device. Its success has prompted calls for an additional research facility to be established at Campbelltown, in partnership with South Western Sydney Local Health District, Campbelltown City Council, Western Sydney University and University of New South Wales.

WESTERN SYDNEY UNIVERSITY'S MACARTHUR CLINICAL SCHOOL

Located within Campbelltown Hospital, since opening in 2009 the school has produced 16 Aboriginal Torres Strait medics and already approximately 1,000 graduates. The medical facility includes a simulation laboratory, library, teaching spaces, lecture theatre, practical rooms, study space and office space for clinical academic teams.

Being based on the hospital site ensures medical students have access to quality training, providing an opportunity for students to develop clinical skills in a hands-on environment.

Image: Ingham Institute for Applied Medical Research at Liverpool



EDUCATION & INNOVATION

KIMBERWALLI CENTRE

Greater Western Sydney is home to more Indigenous Australians than South Australia and Victoria combined so it's THE BEST place for an Aboriginal Centre for Excellence. The \$20m Kimberwalli Centre, on the site of the old Whalan High, works with local people to inspire leadership and develop innovation and opportunities across arts, culture, health, wellbeing, sport and recreation.

BANKSTOWN-LIDCOMBE HOSPITAL

The NSW Government pledged \$1.3b towards the redevelopment of Bankstown-Lidcombe Hospital in 2019, with its relocation to the Bankstown CBD seen as a massive opportunity to create a health and innovation cluster with Western Sydney University, TAFE and research facilities on-site - providing a boost to health services and the creation of more local smart jobs.

ASSYRIAN SPIRIT

This Assyrian school at Horsley Park, opened by NSW Premier Gladys Berejiklian, is the first of its kind to be established in the Western World, honouring the Assyrian faith, language and culture of Patron Saint St. Narsai, the Christian writer known as "The Harp of the Spirit".

CAMDEN PRIVATE HOSPITAL

Plans are underway to develop a major private hospital precinct at Gregory Hills, which upon completion, would make it the biggest and highest capacity of its kind in NSW. The Camden Medical Campus is expected to deliver 473 beds and 2,000 jobs, with the first stage set to open in 2020.

Image: Sydney Science Park at Luddenham is expected to generate 12,000 smart jobs



SYDNEY SCIENCE PARK

Sydney Science Park is more like a city than a park, and at a cost of \$5b is on track to be an internationally recognised epicentre for research and development. The 284ha site at Luddenham, being developed by Celestino, has established agreements with some of the world's leaders in health and science, including CSIRO, ANSTO and the Westmead Health Alliance and will also house NSW's first STEM school, in partnership with Catholic Education.

Upon completion it is expected to deliver 12,000 smart jobs, educate 10,000 students and provide over 3,000 homes.

EDUCATION & INNOVATION

WESTMEAD HEALTH & MEDICAL RESEARCH PRECINCT

*T*he Westmead Health and Medical Research Precinct is the largest collection of hospital and health services nationally and provides a range of specialised services for NSW.

More than \$3b has been committed by government, Sydney University, Western Sydney University, and the private sector to upgrade and expand the precinct's health services, education and medical research facilities over the coming years.

Spanning 75ha, the Westmead precinct comprises over 400,000sqm of high-end health-related developments, including four major hospitals, three world-leading medical research institutes, two university campuses and the largest research-intensive pathology service in NSW.

Supported by the inclusion of both the impending Parramatta Light Rail Network and the Metro West, which will include stations at Westmead, by 2036 the number of full-time staff working within the precinct will increase to more than 30,000 and the number of students will expand to more than 10,000.



PARRAMATTA NORTH/ WESTMEAD SYDNEY UNIVERSITY CAMPUS

The vision for this precinct, which includes a number of heritage buildings, may have been unclear for a few years, but with Sydney University's plans to develop a new campus, things are looking a lot clearer.

More than \$500m has been committed to the creation of a new campus that will serve over 6,000 students and provide student accommodation. Straddling the proposed campus are around 50 buildings within the heritage core, along with vast public spaces, it is hoped that some of these areas will be restored and activated, through arts and events programming. There is also capacity within the site to include a variety of residential and mixed-use spaces, making this precinct the perfect addition to Sydney's 'second city'.

THE QUARTER

The Nepean Hospital Health Precinct, known as The Quarter, is a 300ha innovation hub for healthcare, education, research and community meetings. Built to attract international investment, it helps drive jobs growth and regional collaboration across a range of sectors.

Image: Campbelltown Hospital, artist's impression



CAMPBELLTOWN HEALTH & EDUCATION PRECINCT

Hearts, babies, the sick and suffering of all ages, are cared for at Campbelltown Hospital, which is currently undergoing a \$632m redevelopment. The new works will expand and integrate key clinical and support services to meet the growing needs of South West Sydney's booming communities.

A partnership is also being planned between South Western Sydney Local Health District, TAFE, Western Sydney University, Ingham Institute and Campbelltown City Council to develop an integrated innovation precinct around the hospital. This could include the next stage of the hospital's development, a new Ingham Institute on site, associated health industry private investment, an enhanced tertiary and vocational education offering and direct rail links to the Aerotropolis to help deliver the 200,000 knowledge jobs promised in the Western Sydney City Deal.

EDUCATION & INNOVATION



ANIMAL RE-HOMING CENTRE (ARC)

Annually, more than 10,000 stray, lost or unwanted animals are reunited with their owners or find a new home at the innovative Animal Re-homing Centre at Blacktown. This world-class \$36m facility services several local council areas with everything from a 24-hour vet to cat condos for beloved and furry family members.

Image: Animal Re-homing Centre

JAMES RUSE AGRICULTURAL HIGH

The region's leading selective high school, James Ruse Agricultural at Carlingford, is consistently rated as the best performing in NSW. It has ranked first in HSC results for 28 years straight, and also finished top of the class in NAPLAN, since the exams were established in 2008.

It is estimated that 95% of the student population are from non-English speaking backgrounds and over the years, the school has produced the likes of Scott Farquhar, co-CEO of Atlassian, ABC Election Analyst Antony Green and renowned mathematician Eddie Woo, who delivered the 2019 Western Sydney Leadership Dialogue Lachlan Macquarie Lecture.

SYDNEY UNIVERSITY'S CAMDEN VETERINARY CLINIC

This university facility offers expertise for simple and complex animal health issues. Veterinary specialists in education, research, animal health and professional industry diagnostics gather here along with possibly the cutest and cuddliest residents in the region.

04

INFRASTRUCTURE, BUSINESS & DEVELOPMENT



ANZ STADIUM
AUSTRALIA POST
DISTRIBUTION CENTRE
AUTO-ALLEY
BANKSTOWN AIRPORT
CAMPBELLTOWN STADIUM
CASTLE HILL NORTH PRECINCT
CASTLE HILL
SHOWGROUND PRECINCT
CLYDE REFINERY
DARRELL LEA INGLEBURN
DELOITTE
ENDEAVOUR ENERGY
FAIRFAX PRINTERS
FAIRFIELD SHOWGROUND
FOUR POINTS SHERATON
GILEAD
LEPPINGTON RAILWAY STATION
M12
MAINTENANCE HUB
MECCANO TRAFFIC LIGHTS
METRO WEST

MOOREBANK INTERMODAL
TERMINAL
NORTHCONNEX & WESTCONNEX
NORTH-SOUTH RAIL
NORWEST BUSINESS PARK
ORAN PARK
PAPER MILL
PARRAMATTA LIGHT RAIL
PARRAMATTA SQUARE
PITT TOWN BYPASS
QT PARRAMATTA
QUICKSTEP MANUFACTURING
SOUTH WEST METRO
SYDNEY BUSINESS PARK
SYDNEY METRO NORTHWEST
VITEX PHARMACEUTICALS
WESTERN SYDNEY AIRPORT
& AEROTROPOLIS

SYDNEY METRO NORTHWEST

Sydney Metro Northwest, formerly the North West Rail Link, is the first stage of the Sydney Metro network and upon completion will be the first fully-automated metro rail system in Australia. Look for the new stations, car spaces and forget worrying about departure times with 15 trains a day planned the aim is to just turn up and go.

Connecting the fast-growing areas around the north-west, and linking to Chatswood via Castle Hill and Epping, the project is probably best known for its Skytrain track that runs for four kilometres between Kellyville and Rouse Hill and is up to 13m above ground.

Image: Rouse Hill, North West Metro



METRO WEST

This \$20b project will connect Westmead to the Sydney CBD and is touted as a once-in-a-century infrastructure investment. Along with the Western Sydney Airport, the proposed line, which is still to be fully funded, has been described as a game-changer for the region, potentially linking Sydney's two CBDs in less than 20 minutes. While the number, and location of stations along the route are still to be finalised, there is little doubt that Metro West will catalyse the development of a number of new station precincts, as well as support future employment growth.

SOUTH WEST METRO

The South-West Metro is a key part of the Metro Network and upon completion in 2024 will link Chatswood to Bankstown via the City on a 66km stand-alone track. Work has already started at Sydenham so that the Bankstown Line can be upgraded to modern metro rail standards, with the project expected to provide urban renewal opportunities along the corridor and around station precincts.

Image: Artist's impression of Bankstown's CBD renewal catalysed via the South West Metro project



PARRAMATTA LIGHT RAIL

Construction work has commenced on Stage 1, linking Westmead to Carlingford via the Parramatta CBD and Camellia, and is expected to open in 2023.

The route will link Parramatta's CBD and train station to the Westmead Precinct, Parramatta North Growth Centre, the new Bankwest Stadium, the Camellia Town Centre, the new Powerhouse Museum and Riverside Theatres, the private and social housing redevelopment at Telopea, Rosehill Gardens Racecourse and three Western Sydney University campuses. By 2026, around 28,000 people will use Parramatta Light Rail every day and an estimated 130,000 people will be living within walking distance of light rail stops. Plans are in place (but not yet confirmed and funded) for Stage 2 to Sydney Olympic Park, which is essential to open up the GPOP corridor in the Central City.

INFRASTRUCTURE, BUSINESS & DEVELOPMENT

ANZ STADIUM

ANZ Stadium stands tall - for now, but with the NSW Government committing to a major refurbishment to make it an even better arena for rectangular sport, there's only a small window remaining for those who want to revisit the home of the Sydney Olympics (who can forget Cathy Freeman's famous run?) before it receives its face-lift.

SYDNEY BUSINESS PARK

Based at Marsden Park, Sydney Business Park is a privately owned, master planned estate with an expectation to deliver 17,000 jobs in the booming North-West. It is currently home to a Bulky Goods Centre, featuring the likes of IKEA and ALDI, a Trade & Service Centre and with a town centre also in development.

NORWEST BUSINESS PARK

Based at Bella Vista, the precinct is home to more than 400 companies and employs over 25,000 people. Comprising a mix of commercial, professional and health care services, the site also contains the Hillsong Church and was once the site of Australia's largest ice-skating rink (owned by Hillsong), which sadly closed down in 2017.

NORTH-SOUTH RAIL

Linking the Western Sydney Airport to St Marys, the North South Rail Line, jointly funded by the Federal and NSW Governments as part of the Western Sydney City Deal, is expected to be up and running by the time the Airport opens in 2026.

The Western Sydney Leadership Dialogue was a major advocate for this line - and campaigned heavily for its development - recognising its value in not only improving access to the Airport, but generating improved urban, economic and social outcomes. Plans are currently being considered for extending the line south through Macarthur via Leppington and north to Rouse Hill to connect to the recently opened North-West Metro.

LEPPINGTON RAILWAY STATION

Bearing the name at this western most point of the line means you can't go any further on a track. Leppington Railway Station draws people along a steel rib cage wrapping around Western Sydney. Expect to jostle for a car space but a seat on the train is assured on the first and last stop. There are plans to eventually extend the line beyond Leppington to the Western Sydney Airport to create a stronger south-west connection to one of Australia's biggest infrastructure projects.

INFRASTRUCTURE, BUSINESS & DEVELOPMENT

ORAN PARK

*R*ising from the once-famous racetrack site, this shiny new hood is fast becoming a recognised town centre and home to new pram-pushing dwellers. In eight years Oran Park has grown from a population of zero to more than 7,500 people – justification for the swish new council building, which was opened in 2016. The adjoining Oran Park Library was launched in 2018 and took out the Western Sydney Leadership Dialogue's *Outstanding Community Project Award*.



INFRASTRUCTURE, BUSINESS & DEVELOPMENT

ENDEAVOUR ENERGY

The expert in poles and wires, Endeavour Energy is responsible for the safe and reliable supply of electricity to 2.4m people in households and businesses across Sydney's Greater West. Based at Huntingwood, near Eastern Creek, the Endeavour distribution network is estimated at around \$6.2b, and supplies over 950,000 local customers.

PITT TOWN BYPASS

An increase in residential development was the main catalyst behind this road project being carried out by the NSW Government to improve road safety and traffic flow to and from Windsor.

GILEAD

Handmaids Tale fans are turning their bonnets inside out over Gilead however Lendlease's residential development, which bears the same name, may not aid any revolution or robotic future they had in mind. Not just a fictional setting of an Atwood novel, Gilead is an otherwise country field-filled site, with a young and growing population... 1,000 people called it home in 2019.

AUSTRALIA POST DISTRIBUTION CENTRE

If you've received mail today, there's a good chance it has passed through the \$70m Chullora Australia Post Distribution Centre. Estimates are that one in two packages delivered within Australia, and one in 90 worldwide, travel through here.

DELOITTE

Based in the Eclipse Tower, one of the first major commercial towers in Parramatta, Deloitte has had a consistent presence in the region for over 30 years.

Its *Shaping Future Cities* strategy, a blue-print outlining how to generate 200,000 smart jobs for Western Sydney, is considered among many to be one of the more comprehensive pieces of thought-leadership guiding the region's economic development.

FAIRFAX PRINTERS

The largest of Fairfax's printing presses is based in North Richmond and is also one of the largest non-government employers in the area. The site is five minutes off the M4 and M7, and in addition to printing metropolitan mastheads such as the *Sydney Morning Herald* and *Australian Financial Review* also produces a number of other publications.

INFRASTRUCTURE, BUSINESS & DEVELOPMENT

*T*he \$3.2b urban redevelopment in the heart of the Parramatta CBD is one of the biggest of its kind in Sydney, and also one of the most important.

Set over nearly three hectares, the project will deliver four towers and the largest commercial office building in Australia. The precinct, upon completion, will comprise nearly 300,000sqm of office space, enhanced public and retail space, a business and events centre, and Council's new library and civic building, all within close distance to Parramatta's major public transport hub.

Long-hailed as the project that will signal Parramatta's arrival as "Australia's next CBD" the Square is already home to Western Sydney University's CBD Campus, the Peter Shergold Building and Sydney Water. The latest tower currently in development will house NAB and its 2,000-odd employees, and is expected to be ready in 2020.

The NSW Government has also committed to Parramatta Square, having taken out a 12-year-lease, with 4,200 employees expected to be based within the precinct.

PARRAMATTA SQUARE

CAMPBELLTOWN STADIUM

Campbelltown Stadium is 55km west of the Sydney CBD and worthy of a regular 20,000 strong capacity crowd. The bleacher seat views of this rectangular stadium are among the best for rugby league and in addition to housing Wests Tigers games and the hugely popular annual Tonga Vs Samoa international fixture, will also be the home of the new A-League side Macarthur FC.

INFRASTRUCTURE, BUSINESS & DEVELOPMENT

CASTLE HILL NORTH PRECINCT

Plans to develop Castle Hill North have been created in order to support the more than 50,000 new residents that are expected to arrive in the Hills over the next 20 years. The precinct, which includes Castle Hill Primary School, is expected to feature a range of towers up to 12-storeys and upon completion, accommodate more than 6,000 residents.

QT PARRAMATTA

Set to open in 2020, the QT Parramatta, at 54-storeys, will add to the city's emerging hotel and hospitality scene and support the growth of its tourist and business markets.

FOUR POINTS SHERATON

Much like the QT Parramatta, the 4.5 stars Four Points Sheraton is also expected to open in late 2020 and will offer 300 rooms and a range of hospitality features.

PAPER MILL

A master-planned community with a twist, the Paper Mill Precinct Development, is a showcase of executive apartment living Liverpool-style, fronting the Georges River.

CASTLE HILL SHOWGROUND PRECINCT

Plans for this precinct, which include the Castle Hill Showground site, are currently being developed with the aim of creating a residential, recreational and cultural hub. The Showground precinct features its own Metro (North-West Rail) Station and will feature a mixture of uses and leisure spaces.

Image: Castle Hill aerial

INFRASTRUCTURE, BUSINESS & DEVELOPMENT

WESTERN SYDNEY AIRPORT & AEROTROPOLIS

*T*he new Western Sydney Airport has fast become a game-changer for the region and arguably the most notable place maker that stimulates infrastructure, jobs, surrounds and housing. Strategic planning for the greenfield sites around the Nancy-Bird Walton Airport is unlocking opportunities to deliver jobs, homes and new infrastructure in the heart of Western Sydney. The Aerotropolis is planned to be a 30-minute city, centered around a 'multi-versity' tertiary education offering, (with TAFE hopefully also in the mix in the not too distant future), nearby to the 24-hour, curfew-free airport, which is due to open in 2026.

The Aerotropolis is tipped to generate 200,000 new jobs for the region with a focus on emerging industries such as aerospace and defence, as well as across manufacturing, healthcare, freight and logistics, agribusiness, education and research.

Over the coming decades, residents and workers in Western Sydney will benefit from easy access to strong local and international air connections, improved rail links and a 24-hour economy centred around the new curfew-free Airport.

Image: © Woods Bagot's impression of the proposed World Trade Centre within the Aerotropolis

BANKSTOWN AIRPORT

*B*ankstown Airport accommodates an average of 700 aircraft movements per day – mostly single-engine piston aircraft – and typically engaged in flight training, private flying and related activities.

The site is owned by First State Super and is expected to play a key role, fuelling economic growth and future advanced manufacturing already houses 160 businesses and employs over 4,500 people with a contribution of nearly \$1b to the region.

INFRASTRUCTURE, BUSINESS & DEVELOPMENT

QUICKSTEP MANUFACTURING

Quickstep Manufacturing supplies a range of high-tech composite components for aircrafts. Complex parts made at this Western Sydney manufacturer are used as fuselage parts in aircraft door assemblies and vertical tail components. The parts, made by the 225 staff based in Bankstown, fly up high around the world, every day.

MECCANO TRAFFIC LIGHTS

The iconic Meccano set at the intersection of Hume Highway, Woodville Road and Henry Lawson Drive, a stone's throw from the 'Old Sizzler' site at Lansvale, is arguably Sydney's most famous set of traffic lights.

First switched on in 1962, the lights were revamped earlier this year, with the State Government replacing the existing beams with four new ones, which weigh over 25 tonnes each!

AUTO-ALLEY

If you were after a new or used car in the 70s and 80s, Auto Alley WAS your first (and probably only) stop. The famous Church Street strip once home to the big four of Holden, Ford, Toyota and Mitsubishi, now has more of a prestige feel to it, with plenty of Audis, BMWs, Volkswagens and Jaguars on offer.

While the Alley, particularly the southern end towards Granville, will continue as hot-spot for car enthusiasts (and retailers) there are also new residential plans for its northern tip which are expected to deliver a number of large-scale residential and commercial towers.



INFRASTRUCTURE, BUSINESS & DEVELOPMENT

MAINTENANCE HUB

The Clyde Engineering and Maintenance Hub forms part of Sydney Trains' ongoing Major Works Reform Strategy of streamlining and optimizing maintenance operations, which includes the consolidation of as many as 130 different maintenance locations to larger 'centres of excellence'.

This new fit-for-purpose facility replaced several old depots within the Auburn rail yards precinct, and now accommodates various maintenance and engineering functions in one central location.

MOOREBANK INTERMODAL TERMINAL

Moorebank's 'in-land port' will, when completed, move 1.5m shipping containers annually by rail instead of road, taking 2,700 heavy truck movements off Sydney's roads each day and reducing greenhouse gas emissions by 110,000 tonnes every year. It will also feature Australia's largest purpose-built warehouse and distribution precinct serviced by the latest automated technology which will see driverless shuttle carriers collect and transport containers around the precinct to be processed, unpacked and stored on site or distributed in smaller consignments.



FAIRFIELD SHOWGROUND

As the biggest project undertaken locally, the Fairfield Showground Redevelopment will cost around \$23m and has been dubbed the area's Centennial Park. Work is nearing completion on what will be one of Sydney's best community open spaces for concerts, recreation and festivals so make sure you pack a picnic. A masterplan includes an indoor sports and cultural centre and a 15,000-seat grandstand.

INFRASTRUCTURE, BUSINESS & DEVELOPMENT

CLYDE REFINERY

In its day Clyde Refinery supplied around 40% of Sydney's fuel requirements and 50% of NSW's fuel. The refinery operations ceased in 2012 and it is now solely functioning as an import facility. This and the Parramatta terminals on the Camellia Peninsula in Rosehill, continue to supply a significant percentage of NSW's fuel safely and efficiently.

NORTHCONNEX & WESTCONNEX

The new \$405m NorthConnex road from the M1 Pacific Motorway at Wahroonga to the Hills M2 at West Pennant Hills is due for completion in 2020 and upon completion is expected to remove 5,000 trucks from local roads. The nine kilometre road tunnel will be the longest in Australia. Transurban is also set to operate an expanded WestConnex with the new M4 East tunnels due to open this year, making the cross-town commute much easier for the 'squinters' of Western Sydney.

M12

This east-west 16km motorway links the M7 Motorway at Cecil Hills, with the Northern Road at Luddenham. Construction is expected to start in 2022 and upon completion, in time for the opening of the Western Sydney Airport in 2026, it will improve freight movement and congestion within the broader Western Sydney Aerotropolis.

VITEX PHARMACEUTICALS

Established in 1989 Vitex Pharmaceuticals has become Australia's leading contract manufacturer of vitamins, minerals and nutritional supplements. From a state-of-the-art 26,000sqm facility in Eastern Creek, Vitex's wide variety of vitamins, minerals and herbal supplements include tablets, capsules, soft-gels and powders are formulated, manufactured and packaged by the wholly Australian-owned and family operated company. Founded and operated by the Chami family, Vitex is one of Australia's leading high-quality manufacturers of complementary medicines. In 2018, Vitex signed a Memorandum of Understanding with the NSW Government to establish a new \$10m base within the Western Sydney Aerotropolis.

DARRELL LEA INGLEBURN

Fun fact: Australia's future supply of Life Savers will be manufactured at Darrell Lea's Ingleburn factory. Darrell Lea purchased the product last year from Nestle and will produce 20m packets from the south-west factory each year. The Darrell Lea factory was established in 2014.

Image: New M4 Tunnels mainline entrance at Homebush

05 ENVIRONMENT

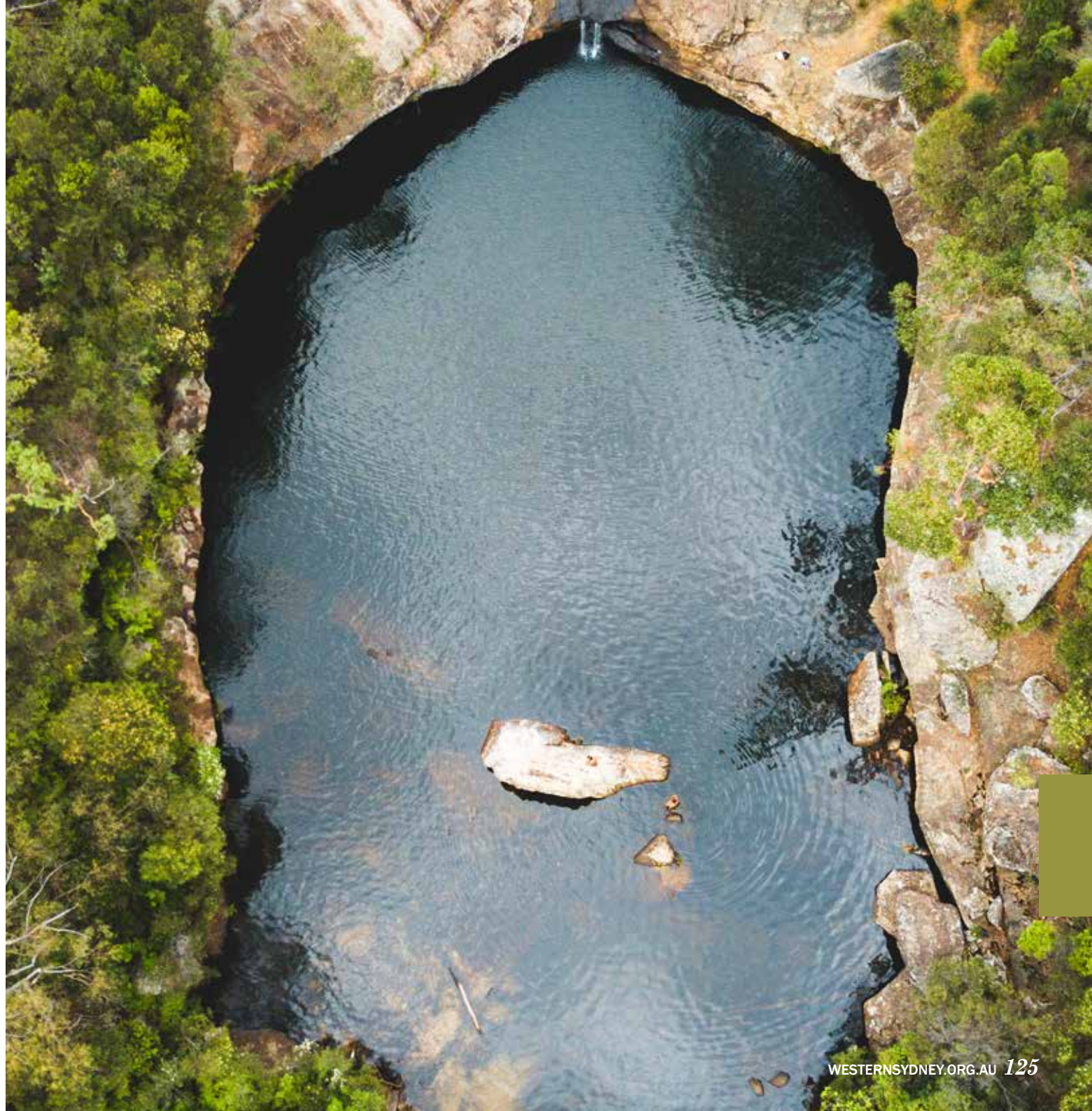
BUTTERFLY FARM
CALMSLEY HILL CITY FARM
CAMPBELLTOWN KOALAS
COOKS RIVER
DHARAWAL NATIONAL PARK
HEARTBREAK HILL CAMPSITE
KOALA PARK
LAKE PARRAMATTA
MOUNTAIN BIKE TRAIL
MOUNT ANNAN AUSTRALIAN
BOTANIC GARDENS
MUOGAMARRA NATURE
RESERVE
NEWINGTON ARMOURY &
BLAXLAND RIVERSIDE PARK
PARR STATE
CONSERVATION AREA
PARRAMATTA PARK
PARRAMATTA RIVER
CATCHMENT GROUP
PROSPECT RESERVOIR
RED HANDS CAVE
REVESBY BEACH
SOUTH CREEK
TENCH RESERVE
WESTERN SYDNEY PARKLANDS
WOLLEMI NATIONAL PARK

ENVIRONMENT

DHARAWAL NATIONAL PARK

Waterfalls and walking tracks, wild life and wonder await visitors at Dharawal National Park at Appin. Pristine lookouts, perfect for a proposal to bring out the ochre in anyone's eyes. Learn about Aboriginal culture, minus a trip to Uluru, with a swim in a watering hole or take a tour of the surrounds and absorb its natural and cultural significance.

Image: Dharawal National Park



ENVIRONMENT

KOALA PARK

West Pennant Hills' Koala Park offers the chance to shear a sheep, pat a dingo and then sit back eating a drover's lunch while sipping Billy Tea. Touch, feel, smell and learn about the native animals Australia is so lucky to have – and watch out for the blue tongues!

TENCH RESERVE

Nepean River upgrades have led to improved water quality and waterside dining options. An upgraded boat ramp and dining precinct at Tench Reserve has generated plans for a function centre at Emu Hall.

CAMPBELLTOWN KOALAS

Campbelltown is home to the only disease (chlamydia) free koala population in the Sydney Basin. The local council has developed a number of strategies and management plans to ensure the long-term care and protection of these cuddly creatures.

COOKS RIVER

Starting at Yagoona and feeding through the inner west and down south, eventually to Botany Bay, this notorious stretch of waterway, once known for its collection of shopping trolleys, has improved significantly in recent times. Local community and environmental groups, along with Sydney Water, have invested plenty of time and money into improving the water quality and protecting it against further pollution, with the aim of making it more useable.

REVESBY BEACH

Bankstown might not be known for its beaches, but this hidden hideaway, situated along the Georges River, is a popular watering hole for south-west locals to cool down during Summer.

ENVIRONMENT

HEARTBREAK HILL CAMPSITE

*R*emote serenity reaches new heights among the eucalyptus and ferns at Heartbreak Hill Campsite. Pack enough supplies to enable a ride or walk along the Womerah Range Trail, most people take two days. Listen to the kookaburras farewell the day as you sit around the unpowered campsite enjoying the uninterrupted bush sights and sounds.

PARR STATE CONSERVATION AREA

*H*awkesbury's Parr State Conservation Area is known as the wild half of sandstone country. Multi-day hikers, mountain bikers and 4WD rev-heads all recreate here. For those less experienced guided tours are on offer too.

MOUNTAIN BIKE TRAIL

*F*ree outdoor fun is good for our carbon footprint, waist-line and getting outdoors in turn can make the community more accessible and safer. Western Sydney Parklands and Wylde Mountain Bike Trail provide award-winning designer spaces which are the perfect place to start your health-campaign, explore locally and get fit.

WESTERN SYDNEY PARKLANDS

*O*ver 5,000ha of open space, greenery and recreation facilities, the Parklands extend from Quakers Hill in Blacktown LGA, south along Fairfield's western rim to Camden's Leppington. It's as fine a place as any in Sydney to get on your mountain bike, run a trail or enjoy a family picnic. It's also home to eateries, cafes and a host of larger attractions like Prospect Reservoir and the International Equestrian Centre.



Image: Western Sydney Parklands

ENVIRONMENT

SOUTH CREEK

*F*eeding from the Nepean Hawkesbury and running all the way down to the Macarthur, South Creek is one of the most critical waterways in Western Sydney. Its significance has gained more attention in recent times after the Greater Sydney Commission developed the South Creek Strategy as a way to leverage this stream and deliver better urban, social and economic outcomes.

NEWINGTON ARMOURY & BLAXLAND RIVERSIDE PARK

*F*eaturing the longest continuous gallery wall in Australia the Newington Armoury is a unique arts precinct born from buildings heralding from military and industrial days gone by. The Armoury Café is a popular water-side meeting spot and combined with the always-busy Blaxland Riverside Park, featuring one of the best playgrounds in the region, this a must for active families who enjoy getting out and about!

PARRAMATTA RIVER CATCHMENT GROUP

*P*arramatta River Catchment Group has been leading the charge when it comes to making Parramatta River swimmable by 2025.

LAKE PARRAMATTA

*O*ne of Parramatta's hidden gems, this local 10.5ha watering hole was officially re-opened for swimming and water recreation activities in 2015 and with its picnic facilities, and walking track, regularly attracts big crowds during the warmer months.

LAKE PARRAMATTA

ENVIRONMENT



PROSPECT RESERVOIR

How many mega litres does it take to fill Prospect Reservoir? Our state's largest reservoir stores, then coveys, water from Warragamba Dam, the Upper Nepean Dams (Cataract, Cordeaux, Avon and Nepean) and sometimes from the Shoalhaven Scheme. Walk a track, BBQ your lunch but whatever your fancy, look after this 50,200 megalitre embankment dam – it's a 2.2km stretch of our most precious asset and at 26m high is a sight to behold.

PARRAMATTA PARK

Site of the oldest surviving Government House in Australia, Parramatta Park forms a history-filled green belt in the centre of the CBD, flanked by Bankwest Stadium and Westmead. Featuring an abundance of recreational space, and a popular exercise spot for cyclists and runners, the site is also home to major events and festivals, including *Tropfest* and *Symphony Under the Stars*. The \$6m *The Crescent* is capable of hosting 18,000 people. In 2010, Parramatta Park's history was recognised by UNESCO, bestowing it with world heritage status.

ENVIRONMENT

BUTTERFLY FARM

Billed as a Butterfly Farm and Activities Resort this Windsor institution has welcomed families since, it seems, bugs first inhabited Western Sydney. The living and “stuck” collections include a variety of moths, beetles, spiders, scorpions and insects from South East Asia. Creepy to some, magnificent and interesting to others, the current breed of curious visitors welcome an up-close nature experience. The gift shop even has live specimens for sale. BYO net.

MOUNT ANNAN AUSTRALIAN BOTANIC GARDENS

Home to more than 1.4m plant specimens, Mount Annan Australian Botanic Gardens is known as THE plant bank.

Scientific research done over more than 20 years on the Wollomi Pine project, to better understand genetic variations and help protect and grow the endangered “dinosaur tree”, has made this a world recognised place for science buffs and green thumbs alike.

Adding to its appeal is the National Herbarium of NSW and its collection of over 1.43m plant specimens, which will move to a new purpose-built, state-of-the-art facility at the Mount Annan site in 2020.



MOUNT ANNAN
AUSTRALIAN BOTANIC GARDENS

ENVIRONMENT

MUOGAMARRA NATURE RESERVE

Just south of the Hawkesbury River is the Muogamarra Nature Reserve. The 2274ha site offers several great trails including the short flat 2km Point Loop walk right up to the 10km archaeologically significant Peats Crater walk, including a 200m descent that leads along a convict road to the site of George Peat's farm.

RED HANDS CAVE

With so many examples of Indigenous Art in the Blue Mountains it's hard to choose what to visit. Red Hands Cave is a mesmerising place, accessible only on foot along a scenic track, near Glenbrook. Keep an eye out along the trail for the Aboriginal axe grinding grooves beside Camp Fire Creek.

WOLLEMI NATIONAL PARK

The place where the only known living wild specimens of the Wollemi Pine lives, bound by greenery and national parks to protect it. Located on the western edge of the Sydney Basin the deep valleys, canyons, cliffs and waterfalls are a natural treat.

Image: Calmsley Hill Farm

CALMSLEY HILL CITY FARM

In the middle of the Western City Parklands, Calmsley Hill is a working mixed farm offering city kids a hands-on opportunity to learn about milking, shearing, animal husbandry, native species and sustainable farming techniques. Cuddle a koala, milk a cow, ride on a tractor – and learn how a farm works!

06 HISTORY

BLANDS OAK
BROUGHTON PASS
CAMDEN PARK HOUSE
CAMPBELLTOWN OBSERVATORY
GLEDSTON ESTATE
GRANVILLE TRAIN STATION
HARRINGTON PARK
LENNOX BRIDGE
PARRAMATTA CULTURAL
AND ARTS HUB
PARRAMATTA FEMALE FACTORY
PARRAMATTA GAOL
RICHMOND BINI DOME
RICHMOND RAAF BASE
ROOKWOOD CEMETERY
ROXY THEATRE
VINEGAR HILL

HISTORY

The Parramatta Gaol, Government House, the Norma Parker Centre, Parramatta Park, Cumberland Hospital as well as the surrounding parklands, all combine to form part of Parramatta's Heritage Precinct. These, along with the nearby Female Factory are listed by the National Trust and the Australian Heritage Commission. The eclectic precinct buildings, both Georgian and Victorian in design, range from beautifully preserved sandstone mansions, with sprawling gardens, to partially preserved historical cottages of significance.

PARRAMATTA GAOL

The gaol stopped operating as a correctional facility in 2011 and is now managed, and controlled by the Deerubbin Local Land Council, (one of the biggest landowners in the region) after its successful land claim in 2015. The heritage-listed sandstone site was established in 1798 and has housed some of Australia's most notorious criminals, including Neddy Smith. These days it acts as a popular TV and film set, houses local community events and also provided a dramatic, and memorable, backdrop for Tex Perkins who performed in the gaol's grounds as part of the Sydney Festival in 2015.

PARRAMATTA FEMALE FACTORY

The national heritage listed Parramatta Female Factory was home to all unmarried and unemployed female convicts during our early colonial years. Thousands of women were processed at the site in the 1820s and 30s and then put to work in exchange for not much else than institutionalised torture. It is believed that around one in five Australians are related to the women who were incarcerated at the Female Factory.



FEMALE ORPHAN SCHOOL

Image: The Female Orphan School, situated within the grounds of Western Sydney University's Rydalmere campus, is considered the oldest three-storey building in Australia, and first built to house, educate and train Sydney's orphaned children.

HISTORY

PARRAMATTA CULTURAL AND ARTS HUB

Plans are underway to establish a Parramatta Cultural & Arts Hub within the heritage buildings of North Parramatta. A makeover will create a new community friendly resource that will serve creatives from all backgrounds.

A Centre for Writing and three dedicated writers' rooms have already opened with many more artists to follow their brush, nose and creative instincts there in the future.

ROOKWOOD CEMETERY

Likely the most peaceful place in Lidcombe, Rookwood Cemetery is the world's largest remaining operating cemetery from the Victorian era. Visit the oldest, largest and most multicultural working cemetery in Australia, on their guided sculpture walks for a different take on the history and cultural diversity of Sydney. More than 130 culturally specific and non-denominational areas exist amongst the sprawling lawns. Wander through grand, historic and modern structures or drop in to the family research centre to uncover your own past.

Image: Campbelltown Observatory

CAMPBELLTOWN OBSERVATORY

Astronomy nights, exploring the latest discoveries and developments in astrophysics and engineering, are par for the course at Campbelltown Observatory. Owned by Western Sydney University, its twin domes twist skyward and from atop its place on the hill it draws outer space closer in weekly public sessions.

Home to eminent astronomers, engineers and scientists, its Engineering Frontiers program hosts talented high school students, an Aboriginal science literacy program, workshops for science educators and conferences.

HISTORY

HARRINGTON PARK

The historic residential estate in Camden was first purchased by Sir Warwick Oswald Fairfax (of Australian media fame) in 1944, where he bred many show winning cattle champions and enjoyed gardening, writing, picnics and family-time. The estate is now home to more than 10,000 people, while the beautiful, and historic, Harrington Park House remains in the Fairfax family, having been restored in 2018.

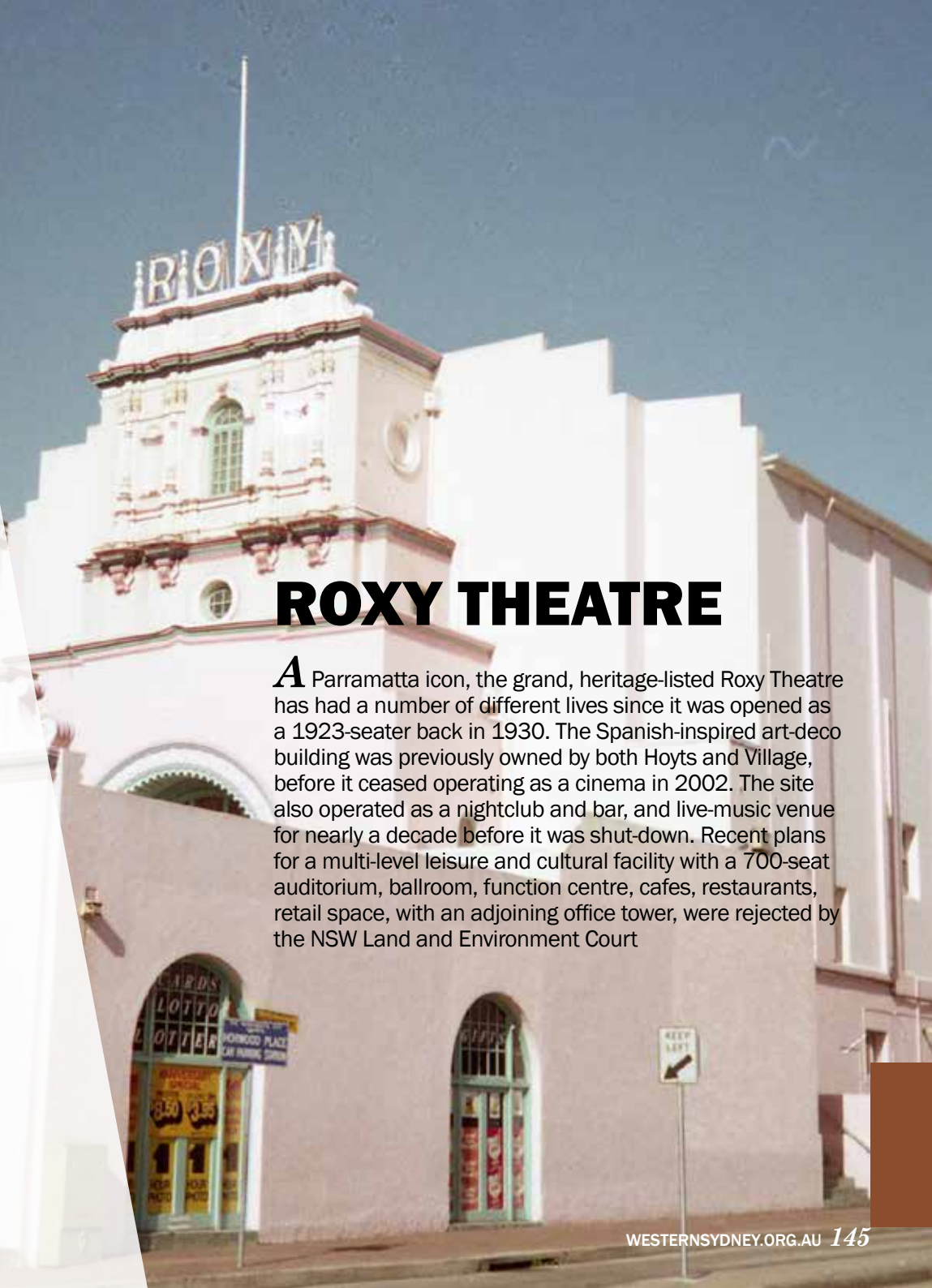
VINEGAR HILL

Named after an Irish uprising, and under the veil of the Eureka Stockade, the first ever battle fought on Australian soil between government Troops and rebel Europeans took place here and while the exact location of the fight has been disputed, it has been memorialised in sculpture at the Castlebrook Cemetery at Rouse Hill.

BROUGHTON PASS

The Historic Broughton Pass was established in the early 1800s and connects residents in Appin, Douglas Park, Picton and Wilton. The bridge was famously closed in 2016 after a retaining wall collapsed, which frustrated residents (and businesses) but since re-opening in 2017 this iconic landmark continues to provide an important link for local motorists – as well as a great view of the Cataract River.

Image: Roxy Theatre



ROXY THEATRE

A Parramatta icon, the grand, heritage-listed Roxy Theatre has had a number of different lives since it was opened as a 1923-seater back in 1930. The Spanish-inspired art-deco building was previously owned by both Hoyts and Village, before it ceased operating as a cinema in 2002. The site also operated as a nightclub and bar, and live-music venue for nearly a decade before it was shut-down. Recent plans for a multi-level leisure and cultural facility with a 700-seat auditorium, ballroom, function centre, cafes, restaurants, retail space, with an adjoining office tower, were rejected by the NSW Land and Environment Court

HISTORY

CAMDEN PARK HOUSE

*S*ince 1831 Camden Park House, a nationally significant Georgian style homestead, has been a central part of 11,300ha rolling estate. Offering a flashback to Australia's wool, wine, dairy, horticulture and colonial history, it's open for tours and is the perfect destination for weekend gardening inspiration.

GLEDSWOOD ESTATE

*T*he pages of Gledswood Estate's book are overflowing with colonial history, wool and wine, fun filled modern memorable functions and an escape into yesteryear. Stone-walled grounds and green rolling paddocks means everyone leaves feeling they've truly escaped the city.



GLEDSWOOD ESTATE

HISTORY

GRANVILLE TRAIN STATION

The site of the tragic Granville rail disaster which killed 84 people in 1977, the worst rail disaster in Australian history. Those who died, along with the 213 injured are remembered every year by the local community.

RICHMOND RAAF BASE

The first Air Force base to be established in New South Wales and the second in Australia. This site once acted as the support airport for Mascot's Sir Charles Kingsford-Smith's but these days is mainly used for airlift and air-to-air refuelling operations. It also regularly hosts air-shows.

Image: Lennox Bridge

LENNOX BRIDGE

The Lennox Bridge is on the site of the earliest documented crossing of the Parramatta River and is one of the oldest bridges in Australia. In the 70s and 80s the bridge's 'convict caves' were a popular hang-spot for local youths, while in 2012, tunnels were formed on either side of the bridge, providing pedestrian and cycleway access through to Parramatta Park. If you decide to take a slower pace as you pass underneath, you'll find its great history detailed in words and pictures.

HISTORY

RICHMOND BINI DOME

*I*talian architect Dante Bini's design, known as the Bini Dome, once stood like a brilliant white space ship. The Richmond High School "bini-dome", one of the icons of the area, has since been replaced with a modern multipurpose facility but a look into the past via a photographic display featuring the minimalist concrete dome is worth a look.

THE BLANDS OAK

*I*s it two? Is it one, which was split by lightning?

Or did its sheer size lead to a split? Whatever you believe Oakdene Park's Blands Oak Tree at Carramar, stands tall. Routed firmly in Western Sydney folklore it is said to stand proudly local but spread its branches far and wide, much like the people of Western Sydney.

Planted more than 150 years ago, and standing 13m tall (and nearly 30m wide) it is said to be one of the oldest trees in the country. In 2018 Fairfield Council applied to the National Trust of Australia to have it listed on the National Register of Significant Trees.

OAKDENE PARK

DUNN. MAYOR. 1982. · J. BURLEIGH. MAYOR. 1939. · WORLD ENVIRONMENT DAY 5.6.1982. · N. DRAYTON. 1982.



Western
Sydney
Leadership
Dialogue

CONTACT THE DIALOGUE

info@westernsydney.org.au

www.westernsydney.org.au

Twitter: @WSLDialogue

Instagram: @bestofthewest_

#bestofthewest

Special thanks to our printing partner

WESTERN SYDNEY
UNIVERSITY

